

LORD
AECK
SARGENT

A photograph of a museum gallery, overlaid with a semi-transparent green filter. The gallery features several white pedestals of varying heights, each displaying a different artifact, including vases, bowls, and a small bust. In the center, a large white informational panel is mounted on the wall, featuring a central image and text. The ceiling is high with exposed wooden beams and recessed lighting. The overall atmosphere is clean and professional.

ARTS &
CULTURE

PAMELA ELAINE POETTER GALLERY

TABLE OF CONTENTS

Arts & Culture Practice Area	01
Museums, Galleries, & Art Education	02
Theatres & Auditoriums	03
Environment, Heritage & Visitor Centers	04
Firm Profile	05



LORD
AECK
SARGENT

ARTS & CULTURE

Lord Aeck Sargent believes that centers of art and culture enrich and stimulate our communities by sharing insights into their visitors' past, present and future. Every museum and cultural center has an unique purpose, location and audience, and success lies in the way stories are revealed to their visitors. At Lord Aeck Sargent, our objective is to craft architecture that advances each client's unique mission.

When a building serves as a theatre, museum, gallery, performance or studio space, its role frequently requires the invisible integration of sophisticated systems. Lord Aeck Sargent's broad experience, technological expertise and dedication to each client's mission has allowed us to expand our role as "client advocate," increasing the range of our services well beyond the traditional scope of "architect."

Our Arts and Culture practice area offers architects who bring many years of experience to your project, helping to ensure that the most current trends in design and technology are brought to your project. Services include:

- Theatre Design
- Fine Arts Education Planning
- Museum Planning
- Interpretive Design Collaboration
- Historic Preservation
- Sustainable Design
- Master Planning





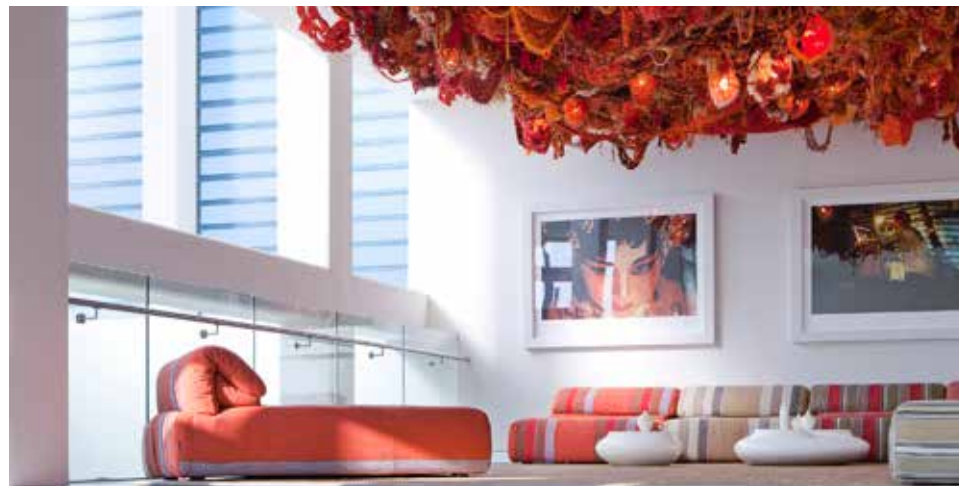


SCAD MUSEUM OF ART

Savannah College of Art and Design
Savannah, GA

This landmark rehabilitation project includes a distinctive new façade incorporating remnants of the original gray brick North Shed against a modern precast concrete and glass curtain wall backdrop. An interior art courtyard and sculpture garden along with a revitalized streetscape turn the formerly industrial precinct into a highly walkable, pedestrian-friendly extension of Savannah's famous historic district. Outdoor lecture and performance spaces enliven the burgeoning arts district, and an outdoor events terrace, which overlooks the adjoining interior atrium, provides an active element for the larger complex.

Designed by Sottile & Sottile and Lord Aeck Sargent, in association with local associate Architect Neil Dawson.





THE WOODRUFF ARTS CENTER EXPANSION

High Museum of Art Expansion, Hertz Stage Renovation & Expansion, Sculpture Studio / Residence Hall, Symphony Hall and Alliance Theatre Expansion
Atlanta, GA

The campus expansion includes two new museum buildings and an administrative building for the High Museum of Art; a new sculpture studio and residence hall currently used by SCAD; and a new 400-car underground parking garage and restaurant to serve the campus. A new covered loading dock, musicians' entry, costume storage, music library and black-box lobby space serve the Hertz Stage, Symphony Hall and the Alliance Theatre.

These new buildings are organized around and orient to a new plaza that is open to the Atlanta streets. The project mission was to build a "village for the arts" that would offer a place where people can linger and enjoy the art around them.

Designed by Renzo Piano Building Workshop in collaboration with Lord Aeck Sargent.





STENT FAMILY WING RENOVATION & RESTORATION

High Museum of Art
Atlanta, GA

The building, located in midtown Atlanta, was designed by renowned architect Richard Meier. Acclaimed for both its architecture as well as the treasures inside, the museum has been re-configured to meet the changing needs of the museum and restored to greater reflect its original design intent.





THE BASCOM VISUAL ARTS CENTER

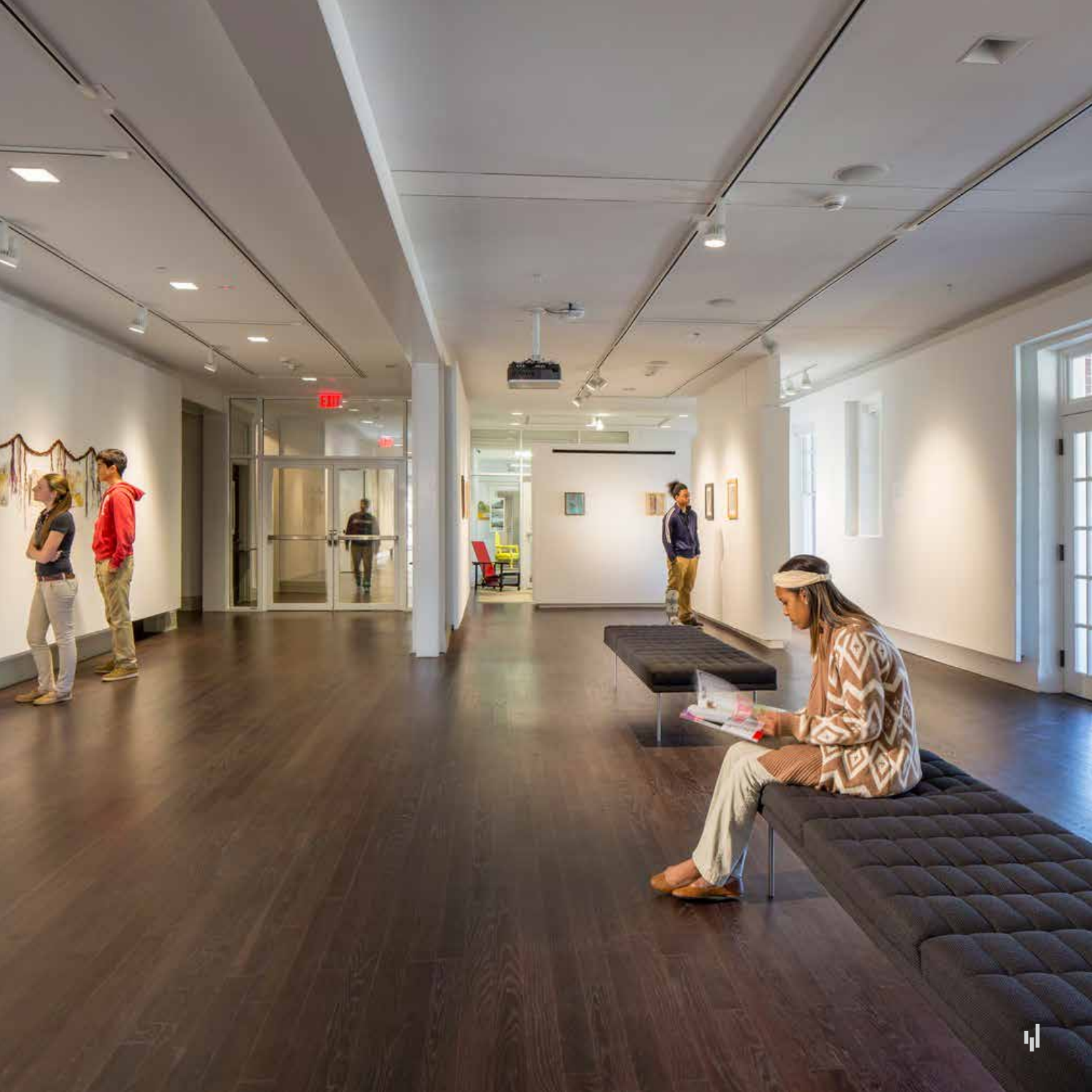
Highlands, NC

The new Fine Arts Center was designed to accommodate a variety of art programs from children's classes to adult workshops. There is gallery space for the permanent collection and traveling exhibitions primarily focused on decorative arts and regional sculpture. Support space included offices, a museum shop, collection storage and exhibition preparation.

The project was completed in collaboration with DeWolf Architecture.







ENNIS HALL REHABILITATION

Georgia College and State University
Milledgeville, GA



Ennis Hall is a stately former residence hall constructed in 1918 on the campus of Georgia College and State University (GCSU). The 29,000 sf brick structure is one of a series of classical revival buildings in the Milledgeville historic district, which defines and characterizes this central Georgia campus. The building has seen few alterations through the years and retains most of its historic materials, details and spaces.

This comprehensive rehabilitation as a new home for GSCU's Department of Art is a blending of past, present and future that serves as space for art education and also as a place to inspire creativity.







OLD GOVERNOR'S MANSION RESTORATION AND ADDITION

Georgia College and State University
Milledgeville, GA

Formerly the home of Georgia's governors, this 1830s National Historic Landmark now is part of Georgia College and State University. The Old Governor's Mansion is considered one of the finest examples of Greek Revival architecture in the country and serves as a museum that interprets the life of Georgia's governors and as an event facility for the university.





SWAN HOUSE RESTORATION

Atlantic History Center
Atlanta, GA

Lord Aeck Sargent's work at the Atlanta History Center's Swan House included the restoration of the 1920s structure to continue its use as an historic house museum and the creation of a 1,800 sf museum for a significant decorative arts collection. The firm integrated new systems, including climate controls, fire safety systems and ultra-violet-protective features, into the historic home. Lord Aeck Sargent's preservation work restored the Swan House's original interior finishes including highly ornate plaster, marble, decorative painting and carved wood to their original appearances while retaining evidence of the passage of time. Swan House was designed by renowned Atlanta architect Philip Trammell Shutze and is listed on the National Register of Historic Places.



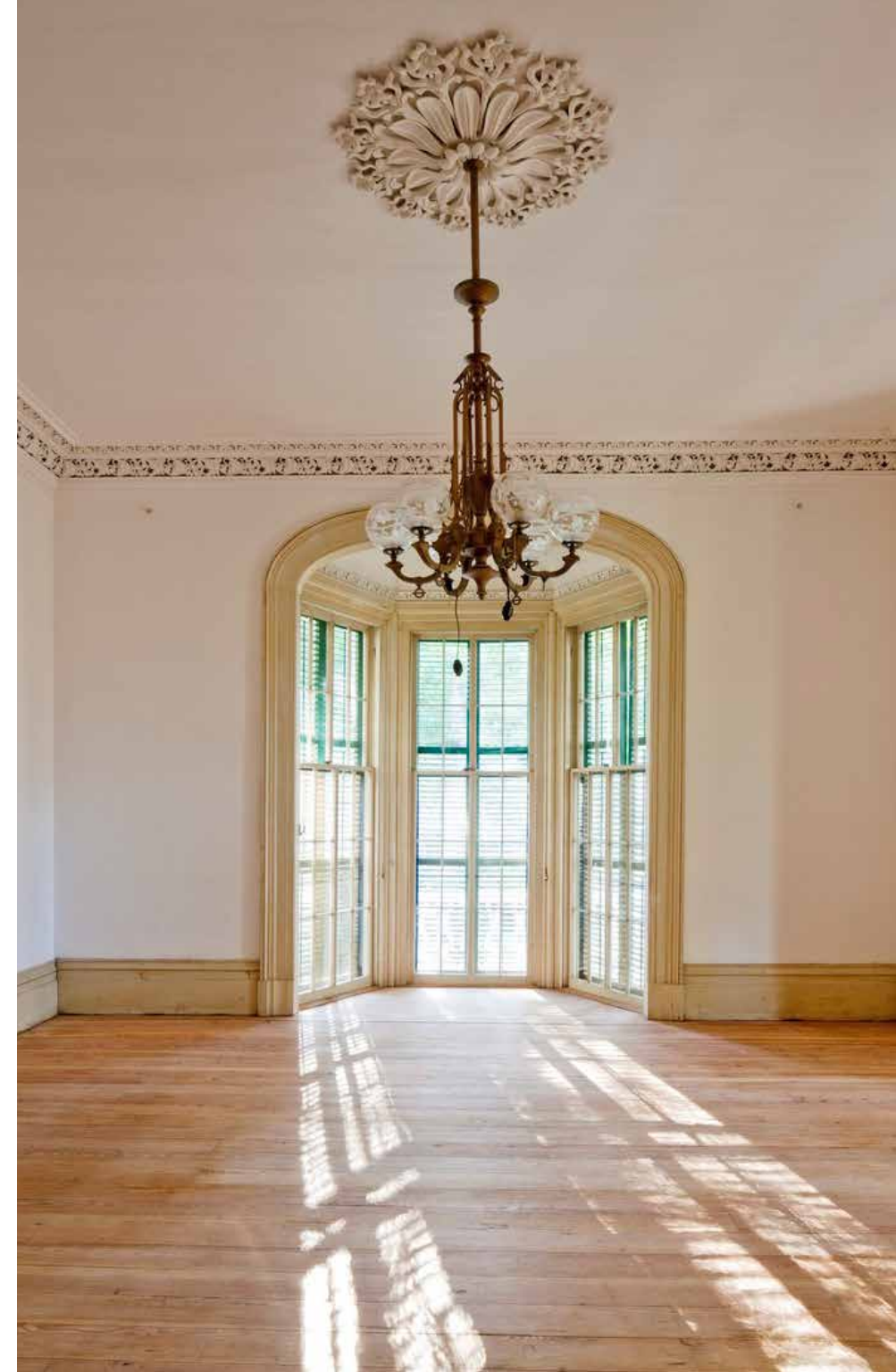
HARDMAN FARM PRESERVATION

Georgia Department of Natural Resources
Helen, GA

Lord Aeck Sargent worked in a design-build relationship with Garbutt Construction for the Georgia Department of Natural Resources on the restoration of Hardman Farm. Home to Governor Lamartine Hardman, who bought the farm in 1902, the 173-acre farm in the beautiful Nacoochee Valley retains buildings that date back to 1870.

The project is a unique fusion of cultural and environmental sustainability, retaining and conserving existing historic materials, while making all project decisions in as environmentally sustainable manner as possible. As such, the conservation approach of "touching lightly" also becomes an environmental approach and allows a historic resource to become an interpretive tool for both cultural and environmental conservation.

LEED Gold





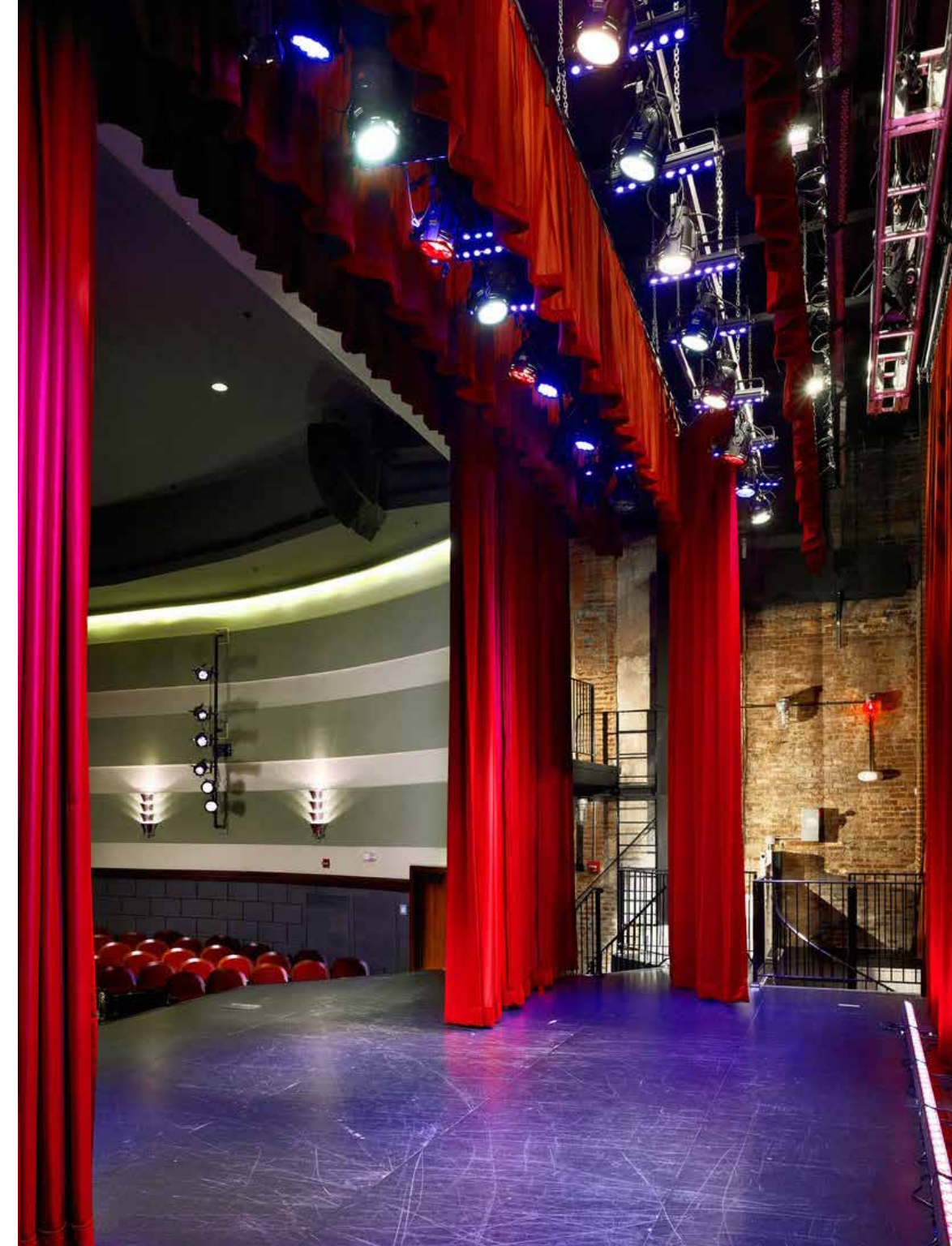
GEM THEATRE REHABILITATION

Friends of the GEM Theatre
Calhoun, GA

This downtown Calhoun structure was constructed in 1920 and in 1936 converted to a movie house. The GEM Theatre ceased operation as a movie theater in 1980 and was then converted to a retail shop. The building had been vacant for 10 years when Lord Aeck Sargent was retained to provide Historic Preservation Architectural Services to recapture the now historic movie house and adapt it to support a variety of public assembly functions including drama, dance, movies and lectures.

Lord Aeck Sargent prepared a Preservation Plan that included measured drawings, identified character-defining features, recommended treatments and a conceptual cost estimate for the Rehabilitation of the GEM Theatre.

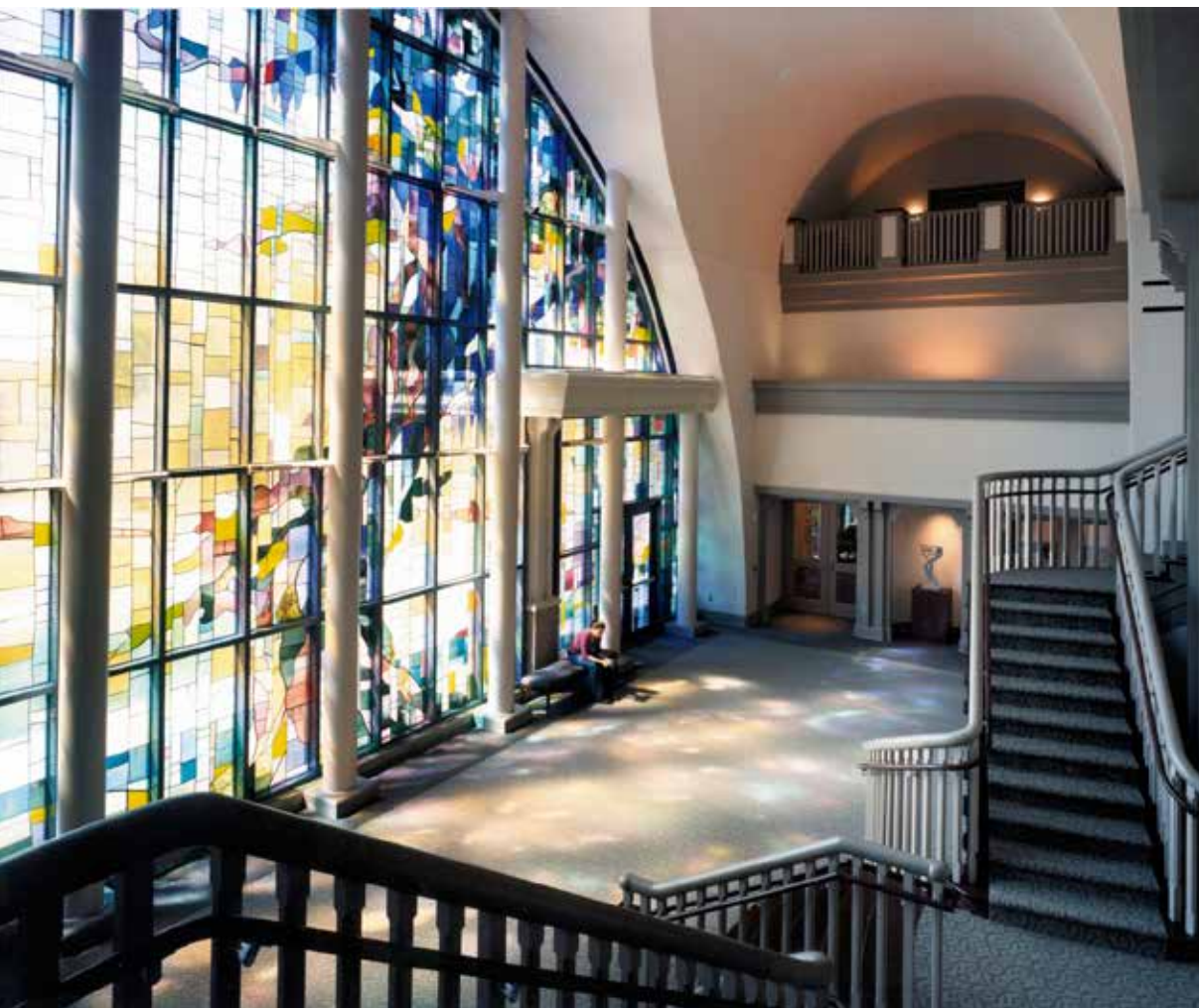
Using the Preservation Plan as its roadmap, the Owner had a successful fundraising program that allowed it to move forward with Lord Aeck Sargent performing a full rehabilitation of the theatre.





JOHN S. BURD CENTER FOR THE PERFORMING ARTS

Brenau University
Gainesville, GA



Lord Aeck Sargent's design for Brenau's performing arts center provides studio and performance spaces for the programs in Art Design, Theatre, Music and Dance. As the heart of the building is a 350 seat theatre. Surrounded by a gallery, recital hall, choral practice room, art/fashion studio, and music practices rooms. Large stained-glass artwork is set into the facility's entry arch, imparting color into, and providing a focal point for, the spacious lobby. The incorporation of art into the walls of the building extends the boundaries of the Center's collection to the art campus beyond.



JOHN S BURD CENTER FOR THE PERFORMING ARTS | BRENAU UNIVERSITY

VALDOSTA MUNICIPAL AUDITORIUM

City of Valdosta
Valdosta, GA

This study was done in collaboration with the City of Valdosta, their appointed Steering Committee, and a team of specialized national and regional consultants to develop market research, programming, planning and design services for a new state-of-the-art home for the Valdosta Municipal Auditorium (VMA).

The facility was conceived as the centerpiece of a new Cultural District for the City of Valdosta. The Five Points site is large enough to accommodate the new facility as well as the new South Georgia Regional Public library, an outdoor amphitheater, a new green-space, a walking path and parking to support the new uses.

The project was designed in collaboration with IPG Architects.



MILLER THEATER RENOVATION

Symphony Orchestra of Augusta
Augusta, GA

The Symphony Orchestra of Augusta (SOA) selected a design team, led by Lord Aeck Sargent Architecture, to provide full design services for the rehabilitation of the 1940s Miller Theater on Broad Street in Augusta. This mid-century building was at one time the second-largest movie palace in Georgia, and is one of the few remaining Art Modern-style buildings left in the country. Since its closure in 1984, the building has fallen into disrepair. However, the SOA intends to breathe new life back into this significant historic structure, located in the heart of downtown Augusta, by transforming it into a symphony hall with flexibility for other uses including theatrical performances, amplified music performances, opera, and ballet.





**ENVIRONMENTAL,
HERITAGE & VISITOR CENTERS**

THE GWINNETT ENVIRONMENTAL & HERITAGE CENTER

Gwinnett County
Buford, GA

Developed through a collaboration of the Gwinnett County Board of Commissioners, the Gwinnett County Public School System, the University of Georgia and the Gwinnett Environmental and Heritage Center Foundation, the Gwinnett Environmental and Heritage Center is an interpretive learning center focused on the importance of water and its relationship to life not only locally, but globally.





BLUE RIDGE PARKWAY VISITOR CENTER

National Park Service
Asheville, NC

Lord Aeck Sargent worked with the National Park Service to develop a new visitor center for the Blue Ridge Parkway. The facility includes exhibit space reflecting the heritage and development of the Parkway, as well as spaces for regional orientation and visitor information. A digital-immersive theatre showing high definition film of the Parkway is a feature attraction.

LEED Gold





BLUE RIDGE PARKWAY
DESTINATION CENTER





CHATTAHOOCHEE NATURE & DISCOVERY CENTER

Chattahoochee Nature Center
Roswell, GA



Lord Aeck Sargent designed two built environments at the site after leading the master plan efforts. Comprising 25 acres of the 120-acre site along the Chattahoochee River, the project includes a 10,000 sf discovery museum and an outdoor pavilion.

The Discovery Center Museum includes a two-level exhibit hall featuring both permanent and changing exhibits focusing on stewardship, conservation and education; a theatre/classroom that seats 65 people; a lobby; and support spaces including offices and catering facilities. The building also has a rooftop terrace that provides views of the river and surrounding landscape.

LEED Gold





RESEARCH & INTERPRETIVE CENTER

Grand National Estuarine Research Reserve
Moss Point, MS



Lord Aeck Sargent, in collaboration with local architect Studio South, designed a research and interpretive center for the Grand Bay Reserve on the Gulf Coast. The facility represents a rare partnership between the National Oceanic and Atmospheric Administration (NOAA), the Mississippi Department of Marine Resources (DMR) and the U.S. Fish and Wildlife Service (FWS).

The National Estuarine Research Reserve System is a network of protected areas established for long-term research, education and stewardship. The protected areas provide essential habitat for wildlife; offer educational opportunities for students, teachers and the public; and serve as living laboratories for scientists.





RESEARCH AND INTERPRETIVE CENTER | GRAND NATIONAL ESTUARINE RESEARCH RESERVE

SALT RIVER BAY NATIONAL HISTORICAL PARK AND ECOLOGICAL PRESERVE, MARINE RESEARCH & EDUCATION CENTER

National Park Service
St. Croix, US Virgin Islands

The Salt River Bay National Historical Park and Ecological Preserve (SARI) is located on the north shore of St. Croix in the US Virgin Islands. Located in SARI, the Marine Research and Education Center (MREC) will enable the National Park Service (NPS) and its partner organizations to fulfill their mission to provide public educational opportunities about and in the marine ecosystems while engaging the local community. It will also allow for the study of the marine environment on a site that offers full immersion access to the fields of research.



Targeting LEED Gold





South Elevation



North Elevation

SAN FELIPE DE AUSTIN HISTORICAL SITE

San Felipe, TX

The San Felipe de Austin Museum and Visitor Center will serve one of the most important historic sites in Texas - the location of Stephen Austin's colony, which was the provisional capitol of Texas during the Texas Revolution. The town was second only to San Antonio in the amount of commerce moving through the city during the early 19th century. However, the town was burned to the ground during the Revolution in 1936, and much development has bypassed the site, leaving it almost forgotten. The Museum and Visitor Center will enhance the visitor experience, renew interest in the site, and serve the surrounding community.

Targeting LEED Silver

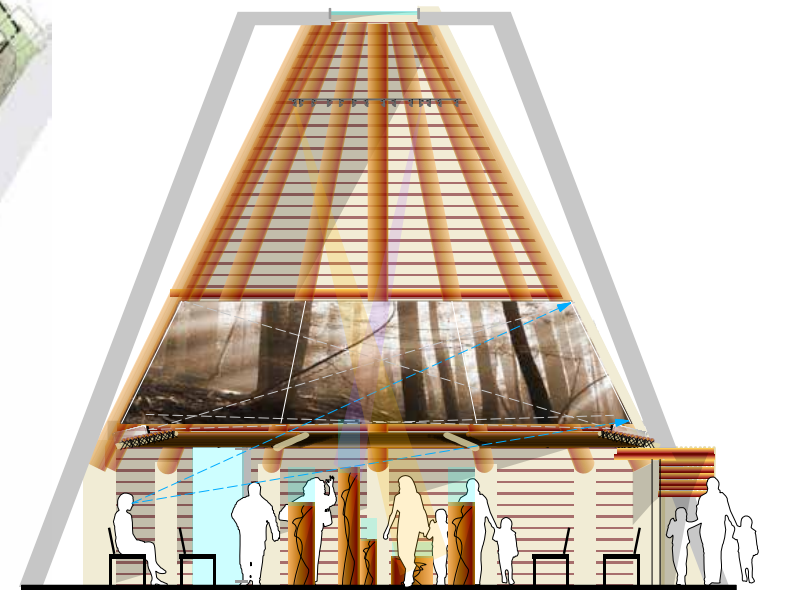


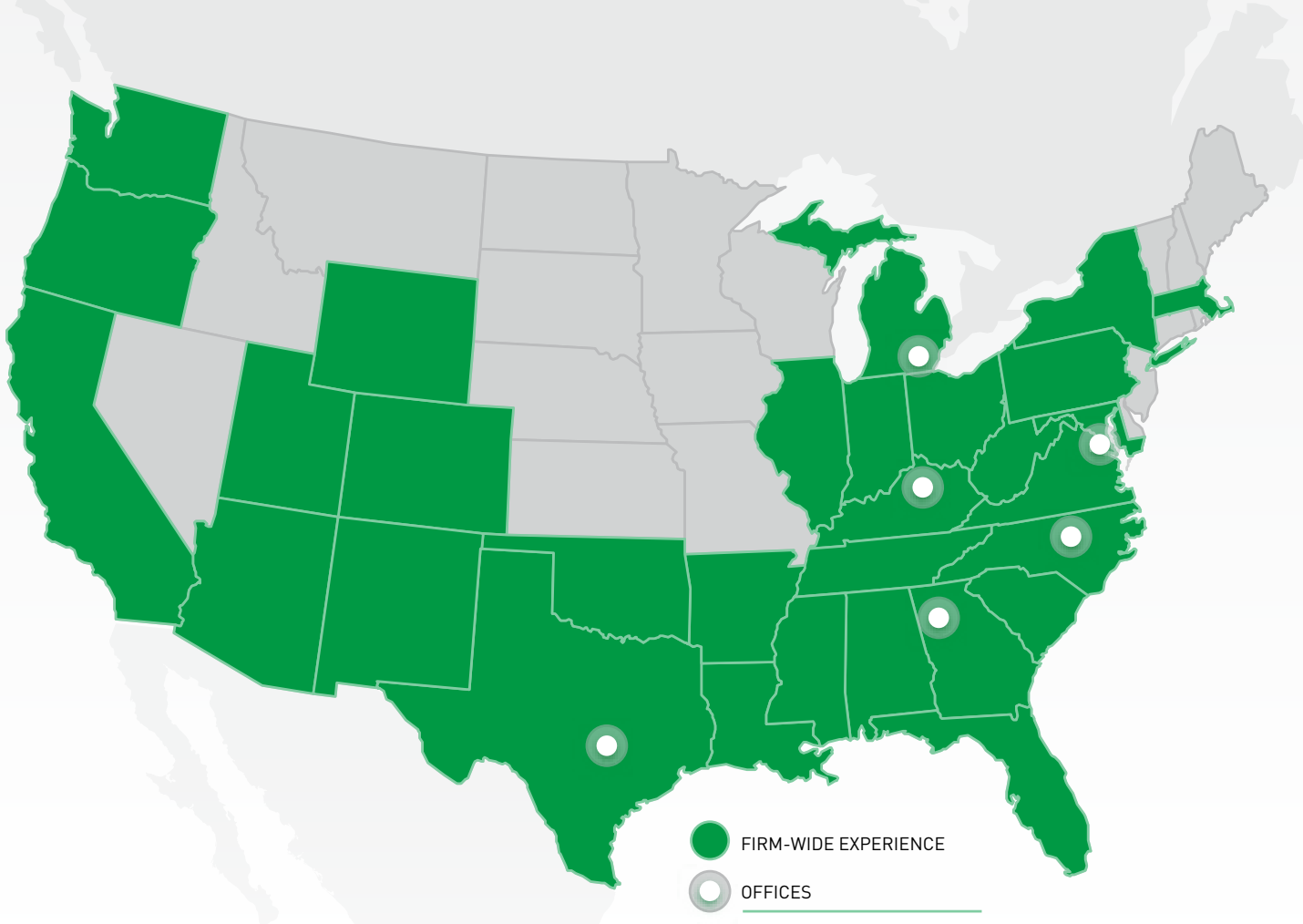


MOCCASIN BEND VISITOR CENTER

National Park Service
Chattanooga, TN

The 755-acre Moccasin Bend National Archaeological District is located on a peninsula formed by a prominent bend in the Tennessee River, situated to the west and just across the river from downtown Chattanooga. The area contains nationally significant archaeological sites that chronicle 12,000 years of continuous American Indian occupation. The Trail of Tears National Historic Trail passes through portions of Moccasin Bend, commemorating the forced removal in 1838 of Cherokee Indians from their ancestral homelands. Important Civil War-era earthworks and associated resources are also located along Stringers Ridge at the southeastern portion of the Bend.





- FIRM-WIDE EXPERIENCE
 - OFFICES
- | | |
|-----------|------------------|
| Atlanta | Chapel Hill |
| Ann Arbor | Lexington |
| Austin | Washington, D.C. |

LORD
AECK
SARGENT

RESPONSIVE DESIGN

NATIONAL
EXPERTISE

05

FIRM PROFILE

RESPONSIVE DESIGN

Lord Aeck Sargent is an architecture and design firm with a 70-year history of creating environments people want to use and preserve.

With offices in Atlanta GA, Austin TX, Ann Arbor MI, Chapel Hill NC, Lexington KY and Washington DC, our firm has seven practice areas: science and technology, higher education, arts and culture, historic preservation, housing and mixed-use and urban design and planning.

We share a common mission of providing responsive design, technological expertise and exceptional service in order to provide our clients with the best possible facilities that will serve them well into the future.



We thrive in the midst of complex projects that require depth of experience and cross-discipline collaboration. Responsive design has been our guiding philosophy for seventy years, and we deliver uniquely creative responses to each project's every detail. The result is thoughtful solutions that respond to the site, the context and the needs of its occupants.

Our portfolio includes museums, arts centers, government buildings, laboratories, corporate headquarters, education facilities and conference facilities. Our services range from master planning and programming to design, construction administration and facility management support.

Our design staff represents a broad range of experiences in design and construction. Our staff includes registered architects, urban designers, materials specialists, interior designers, land planners, cost estimators and zoning specialists.

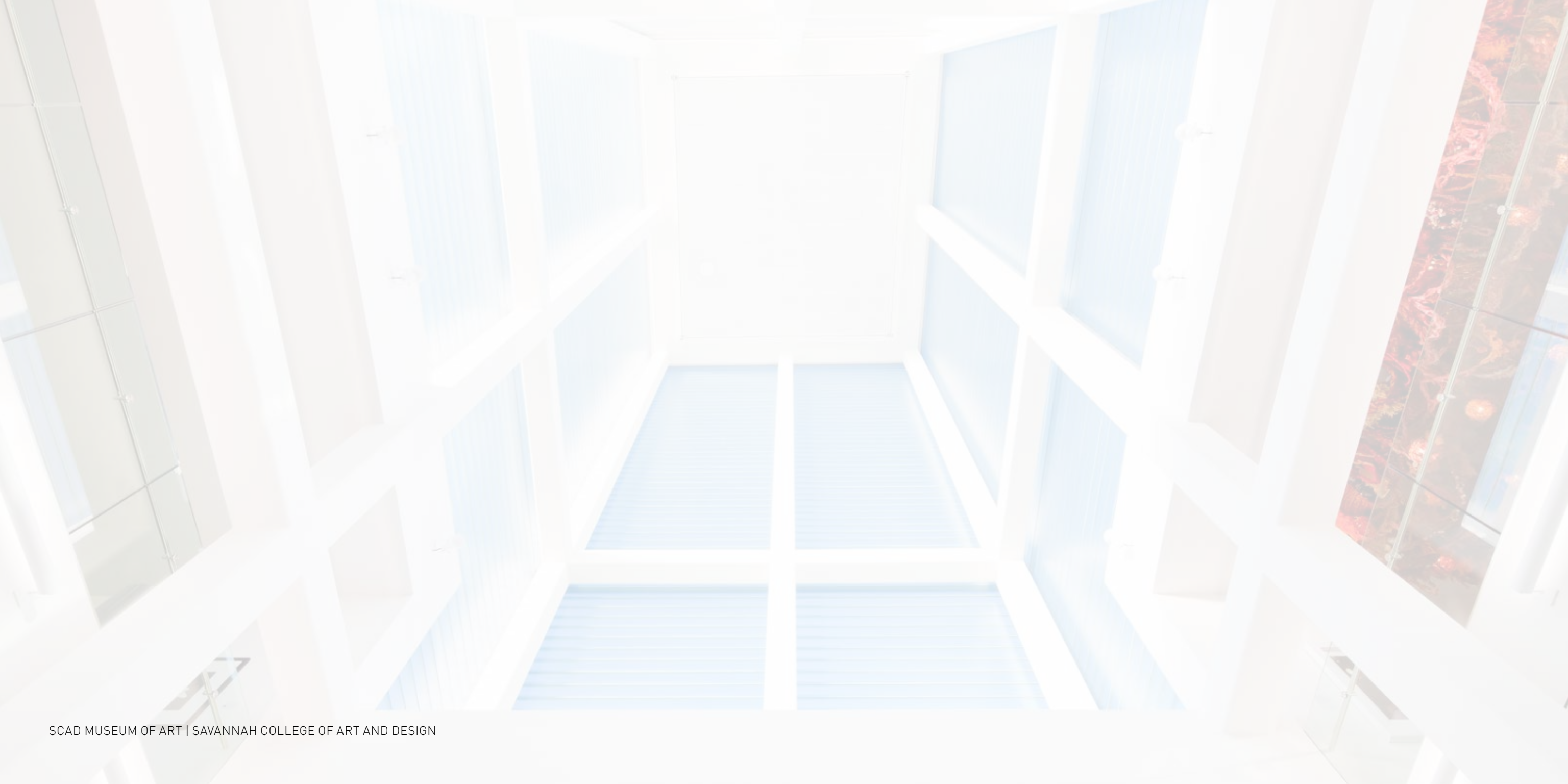
140+
dedicated
professionals

130+
college & university
clients nationwide

50+
LEED-accredited
professionals

50+
LEED-certified projects

2030
LAS was one of the first
architecture firms in the country to
adopt The 2030 Challenge



LORDAECKSARGENT.COM

ATLANTA

1175 Peachtree Street NE
Suite 2400
Atlanta, GA 30361

CHAPEL HILL

1450 Raleigh Road
Suite 109
Chapel Hill, NC 27517

ANN ARBOR

213 South Ashley Street
Suite 200
Ann Arbor, MI 48104

AUSTIN

816 Congress Avenue
Suite 1270
Austin, TX 78701

LEXINGTON

269 West Main Street
Suite 500
Lexington, KY 40507

WASHINGTON, D.C.

1775 Greensboro Station Place
Suite 401
McLean, VA 22102

MARKET SECTOR LEADERSHIP

John Starr AIA, LEED AP BD+C
jstarr@lordaecksargent.com
404-253-1410

Susan Turner AIA, LEED AP
sturner@lordaecksargent.com
404-253-1442