

LORD
AECK
SARGENT

LANDSCAPE ARCHITECTURE

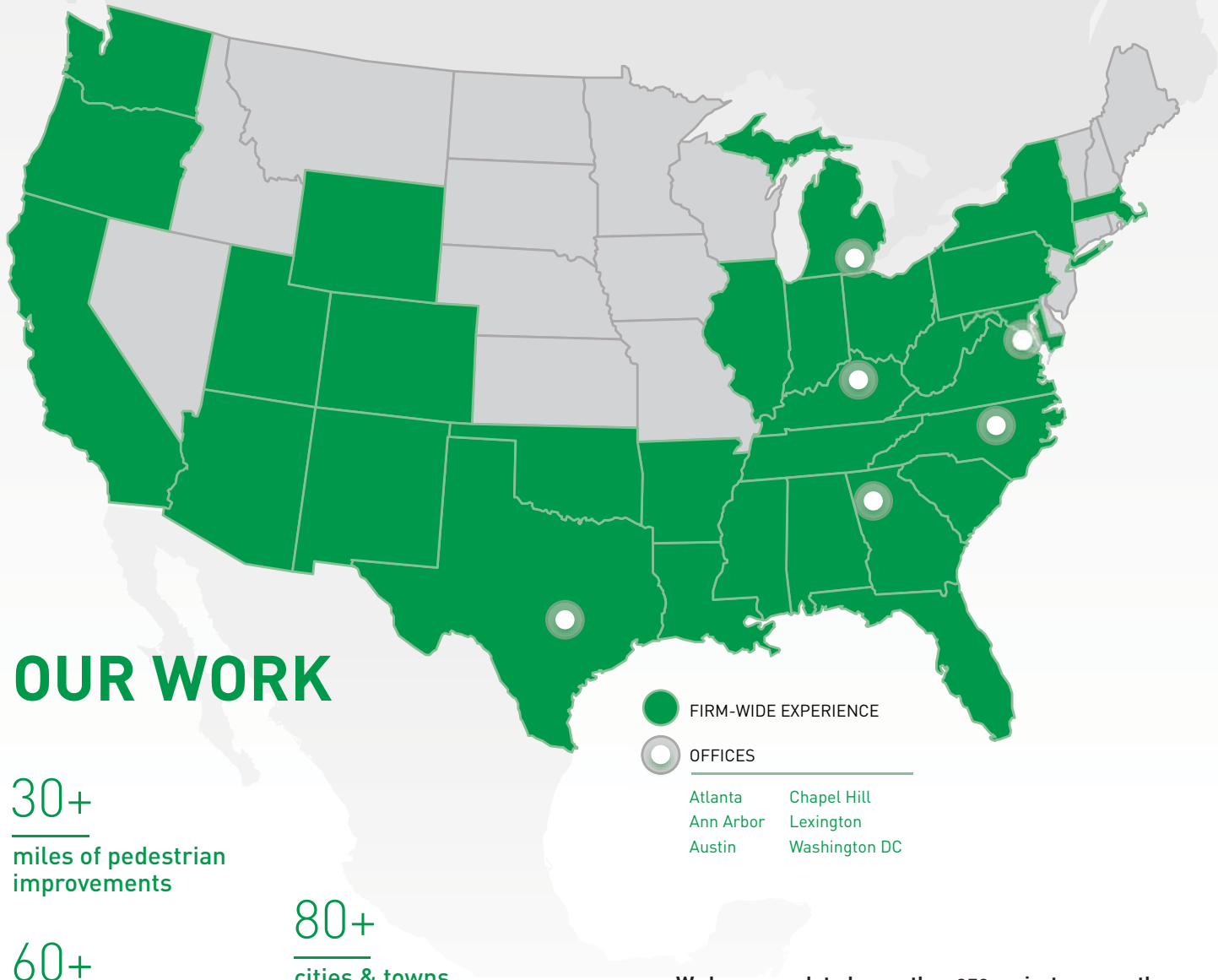
TABLE OF CONTENTS

“Truly innovative design is almost never random. The best ideas are most often a response to the history, culture, or form of a specific place.”

Matt Cherry, RLA, ASLA
Director, Landscape Architecture

Practice Area Overview	01
Campuses & Outdoor Learning	02
Living & Amenity Areas	03
Parks & Plazas	04
Streets & Trails	05
Firm Profile	06







OUR WORK

30+
miles of pedestrian
improvements

60+
school sites
& campuses

80+
cities & towns

300+
community meetings
in the last seven years

-  FIRM-WIDE EXPERIENCE
-  OFFICES
- | | |
|-----------|---------------|
| Atlanta | Chapel Hill |
| Ann Arbor | Lexington |
| Austin | Washington DC |

We have completed more than 350 projects across the country. As a testament to the determination and passion of our clients, our plans have resulted in: thousands of new housing units; first class schools and institutions; hundreds of acres of new parks and open spaces; miles of streetscape and bicycle paths; and, most importantly, the creation of dozens of memorable places.

01

OUR STORY

Lord Aeck Sargent's Landscape Architecture expertise includes everything outside of the building envelope and sometimes on top of it.

Lord Aeck Sargent is an award-winning architecture, landscape architecture and urban design firm with six offices across the country. Our mission of responsive design is dedicated to the creation of enduring places. Our staff includes registered architects, landscape architects, urban planners, materials specialists, preservationists, cost estimators and zoning experts.

The communities we work in are shaped by both the architectural quality of their buildings as well as the shared public spaces between those buildings. As such, our Landscape Architecture practice area focuses on design and function of dynamic open spaces, complete streets, and urban amenities. This expertise is applied across a broad range of scales and settings from multi-faceted public plazas to outdoor learning environments



SERVICES

- Urban Parks & Plazas
- Campus Open Spaces
- Pedestrian Amenities
- Streetscapes
- Trails & Bicycle Facilities
- Sports & Recreation Complexes
- Construction Documentation
- Program Implementation
- Construction Administration



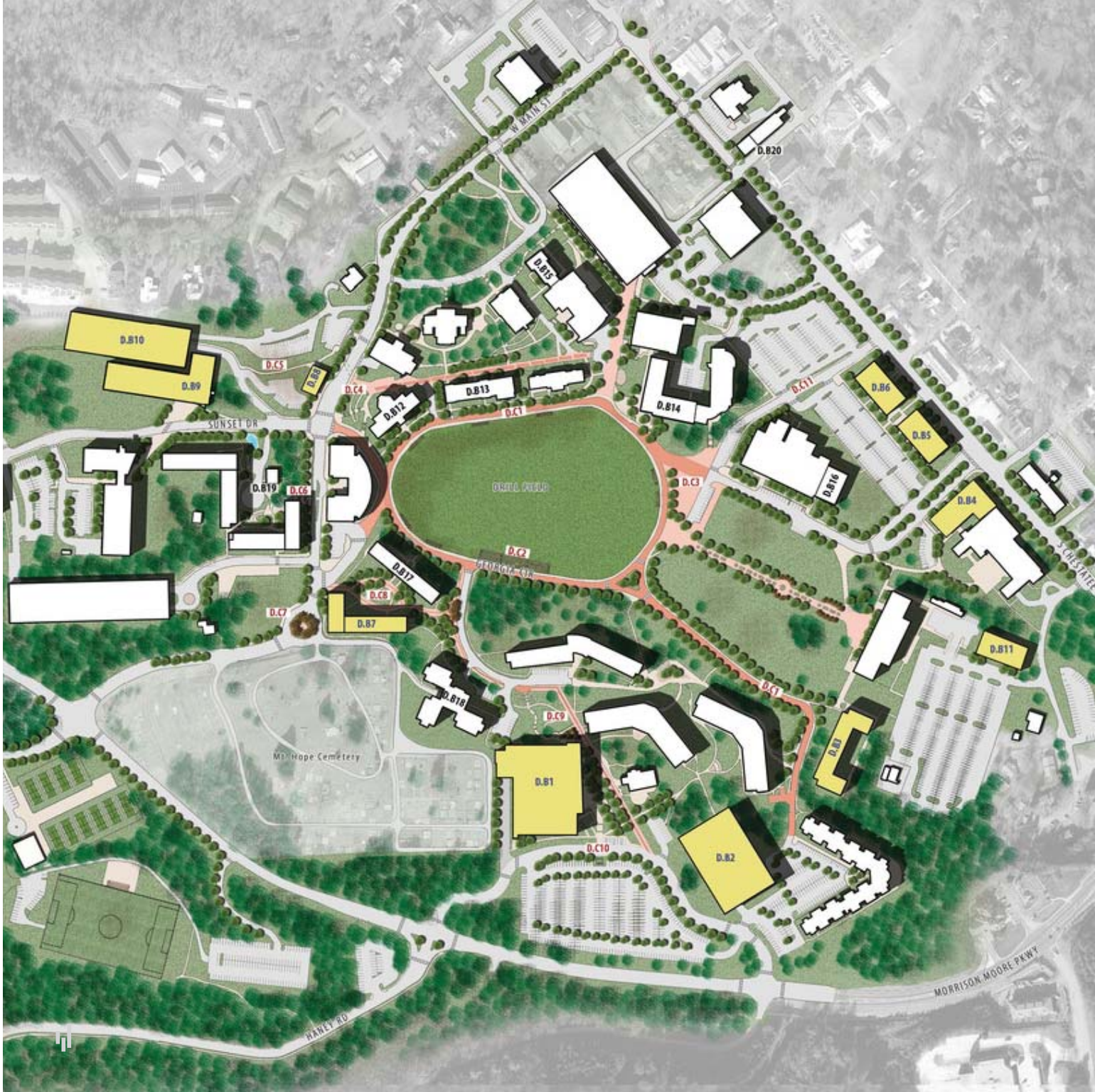
**CAMPUSES &
OUTDOOR LEARNING**

CAMPUS MASTERPLAN

University of North Georgia
Dahlonega, GA / Gainesville, GA / Oconee, GA

Established through the consolidation of North Georgia College and State University and Gainesville State University, The University of North Georgia serves over 15,000 students spread over five campuses. Lord Aeck Sargent was selected to develop the first campus master plan for the newly-consolidated university, focusing on the University's main Dahlonega campus, the rapidly growing Gainesville campus, and the developing Oconee campus.

The master plan balances preservation efforts with future growth strategies, highlighting the unique character and mission of each campus while seeking to fully integrate them into a unified whole. Plans include concepts for open space design/programming, pedestrian connections, universal access, vehicular circulation, consolidated parking and alternative mobility.



CONVOCAATION CENTER

University of North Georgia
Dahlonega, GA

The Convocation Center, a new multi-purpose building, is sited atop a knoll overlooking The University of North Georgia's Dahlonega campus. Once completed, it will include over 100,000 square feet of new academic and event space including athletic, cultural and convocation functions. The site and building design were developed collaboratively creating an experiential entry procession through an exterior monumental plaza into a grand interior vestibule, through the concourse level and eventually down to the large interior event space.

The diagonal lines in the landscape respond to the axial views to the historic parade grounds while giving order to major pedestrian routes and service access. The larger south plaza will function as both a daily gathering spot for students as well as a flexible space for exterior programming in conjunction with convocation events. A student entry plaza on the northern side of the building is conceived as a smaller, more intimate space and receiving point from the meandering hillside path.

**Architectural scope designed in collaboration with Rossetti Architects.*



CENTRAL QUAD

Millersville University
Millersville, PA

Campus open spaces are often as iconic and multi-faceted as their buildings. This is definitely the case with Millersville University, where Lord Aeck Sargent served as both architect and landscape architect for three new residence halls fronting a main campus quad. The resulting landscape not only provides shaded

pedestrian connections between buildings, but responds to challenged site grades by creating a series of terraced softscape outdoor "rooms". It is an understated yet elegant design solution that integrates both interior and exterior spaces into one cohesive learning environment.



PATTERSON HALL LANDSCAPE

University of Kentucky
Lexington, KY

Lord Aeck Sargent transformed Historic Patterson Hall in Lexington from a dormitory into a Living/Learning Center with state-of-the-art technology and a combination of educational and residential space.

Lord Aeck Sargent's Landscape Architecture, Education and Historic Preservation practice areas worked collaboratively to develop a thoughtful landscape design that gave a nod to the original campus plan, which was designed in the 1870s.

A wide pedestrian walkway connecting Patterson's front door to South Limestone, a prominent retail street adjacent to campus, is flanked by limestone seat walls and highlights a newly-opened view to Patterson's front façade.

The new landscape design also includes a crushed brick pathway with seating beneath large shade trees. Large-caliper oaks along the pathway mimic the crushed path that originally existed within Patterson's front yard in the early part of the 20th Century.



O'SHAUGHNESSY HALL LEARNING QUAD

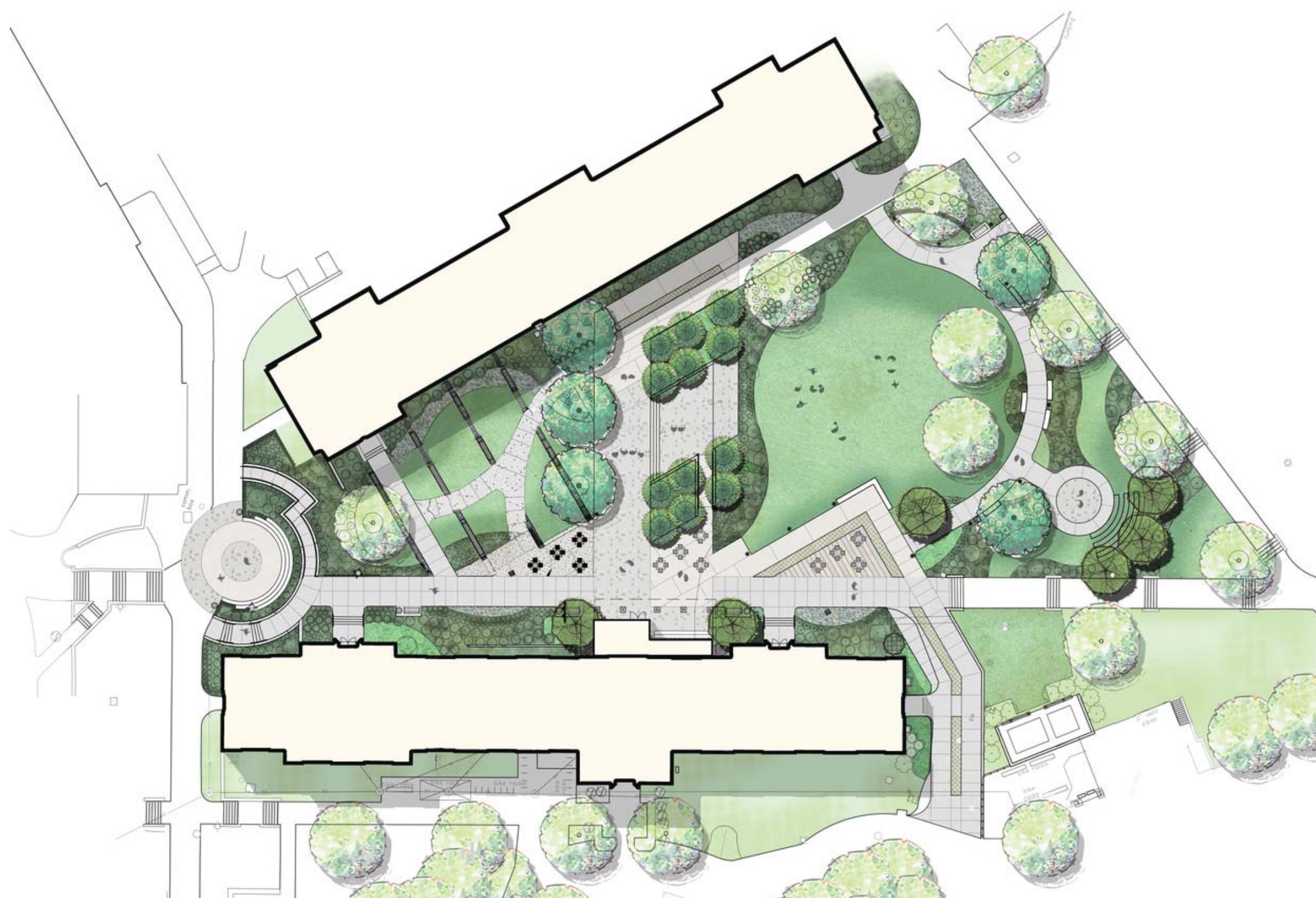
Virginia Polytechnic Institute and State University
Blacksburg, VA

Lord Aeck Sargent's team of architects and landscape architects worked collaboratively to develop a new outdoor learning quad associated with the renovation of O'Shaughnessy Hall.*

The architectural program calls for the conversion of the building from a traditional dormitory model into a Residential College. The site design focuses on blending interior and exterior space, transforming underutilized areas adjacent the building into premier outdoor learning and amenity spaces. A new "porch" acts as a key outdoor feature, tying directly into a renovated lobby and lounge area for residents. A ceremonial space in the form of a recessed ceremonial outdoor "room" also celebrates the matriculation process in a symbolic procession into and through the new quad.

Given its unique location on campus, the new quad is intended to act as a counterpoint to the traditional open lawn quadrangles found across the University landscape. The design approach focuses on creating a series of spaces for social interaction interwoven with fully-accessible pedestrian circulation routes. The resulting collage of elements creates what will become a truly dynamic place for students, faculty and visitors.

**Architectural scope designed in collaboration with Moseley Architects.*

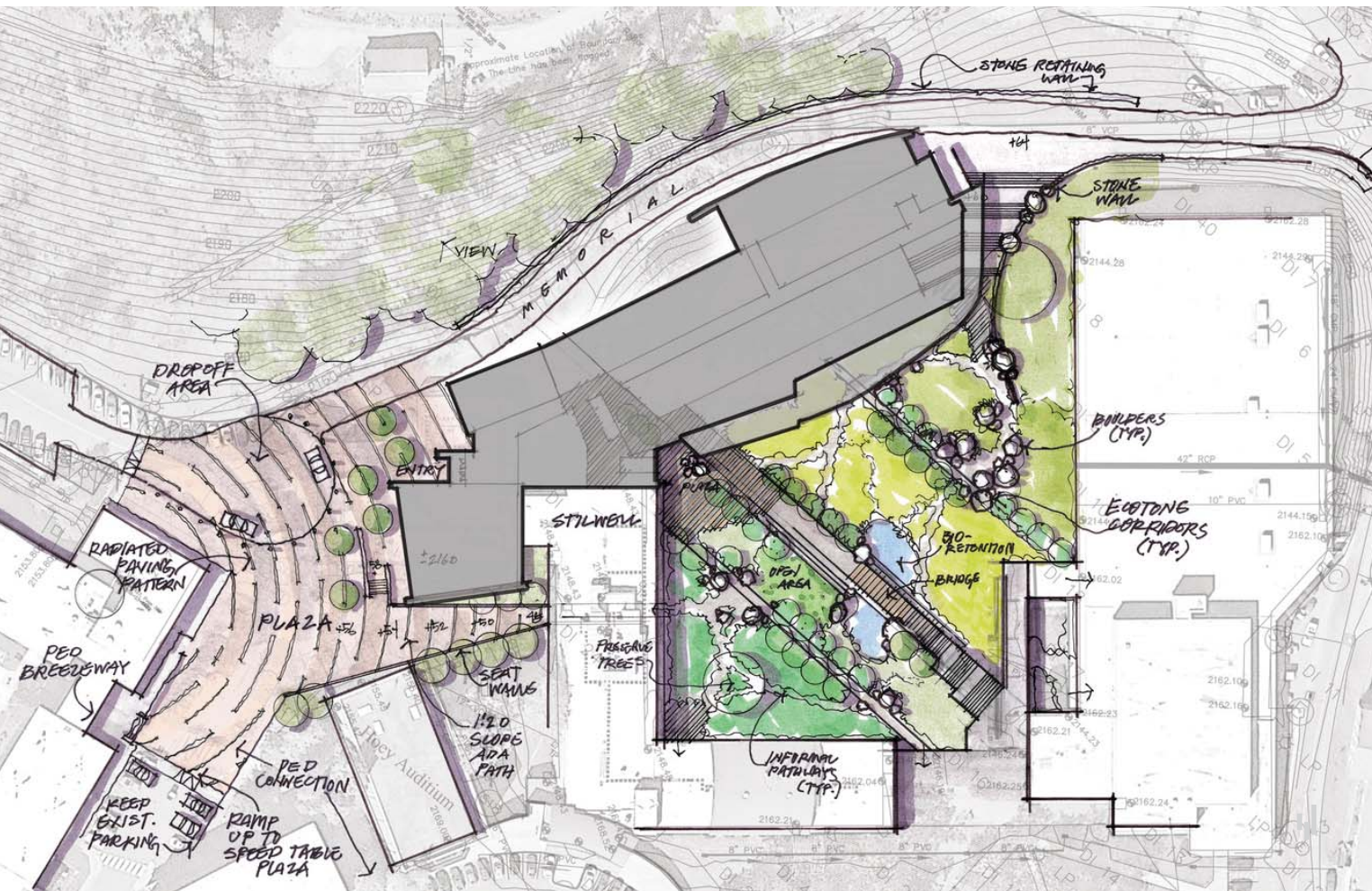


STEM CENTER & SCIENCE QUAD

Western Carolina University
Cullowhee, North Carolina

As part of the design for a new STEM building for Western Carolina University, Lord Aeck Sargent is transforming this portion of campus into a dynamic new science hub. Phasing and placement of the new STEM building will be constructed in a way that frames a large new outdoor quad and better-connects it to other key pedestrian routes throughout the campus. Sustainable design

strategies and the philosophy of “putting Science on Display” are guiding principles for the design team. The overall design – both inside and outside – is inspired directly by the unique history, culture and ecologies of mountainous western North Carolina including the influence of the Cherokee civilization.



CAMPUS DESIGN

Atlanta International School
Atlanta, GA

Lord Aeck Sargent worked with this private K-12 school through several planning, design and construction efforts, including a 2014 Campus Master Plan and a subsequent \$4 million exterior campus transformation.

Completed in Fall 2016, LAS provided design, construction documentation and construction oversight for installation of a new track and field complex, competition-size soccer field, signature playground and additional parking lots with sustainably-focused stormwater infrastructure.

Given the large amount of site work involved, LAS also worked with AIS to strategically plan for their future tree canopy - an effort that included careful procurement, selection and planting of over 180 native shade trees.

LAS is also currently working with the school on a major Primary School building addition. The project includes an outdoor learning courtyard and is anticipated to be completed in 2018.





**LIVING &
AMENITY AREAS**

THE BRIX AT MIDTOWN

RISE: A Real Estate Company
Grand Rapids, MI

Lord Aeck Sargent designed a 287-unit residential apartment building in Grand Rapids. The Brix at Midtown, located along the city's Medical Mile, targets young professionals and students.

The Medical Mile is home to Michigan State University's College of Human Medicine, Grand Valley State University's Cook-DeVos Center for Health Sciences, Spectrum Health's downtown hospital campus and clinics, and the Van Andel Research Institute. It will offer a mix of one-, two- and three-bedroom market rate and student apartments and provides such amenities as a fitness center, clubhouse and business lounge.

Throughout the design process, LAS's Landscape Architecture, Interiors and Housing and Mixed-Use practice areas collaborated heavily in order to create seamless indoor/outdoor amenity areas.

Exterior spaces include a large amenity courtyard with pool as well as a series of smaller residential courtyards.

Unique streetscape solutions were also developed with guidance from Grand Rapids' Michigan Street Corridor Plan, which aims to provide a mix of bus transportation upgrades, bicycle lanes and improved sidewalks in the area.

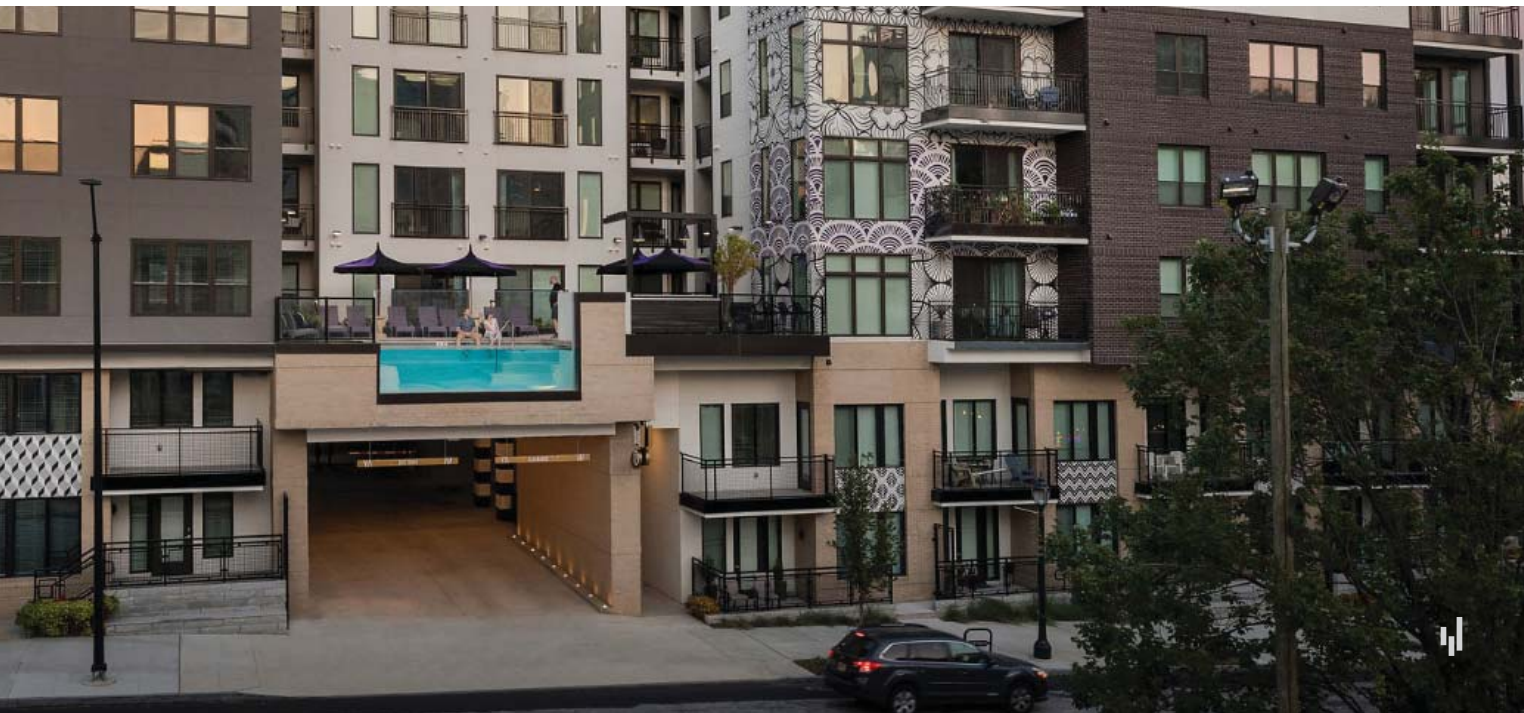


BROADSTONE MIDTOWN

Alliance Residential
Atlanta, GA

Broadstone Midtown is an upscale residential apartment building located at the intersection of Juniper and 6th Streets along the “seam” between Midtown’s Business District and the Historic Midtown Neighborhood.

The building design seeks to thoughtfully transition between the two districts in terms of massing, materials and connectivity. Just as the building architecture helps transition from higher to lower density through a series of roof terraces, the site and landscape help transition between activity center and neighborhood through a series of uniquely-designed porches and street experiences.



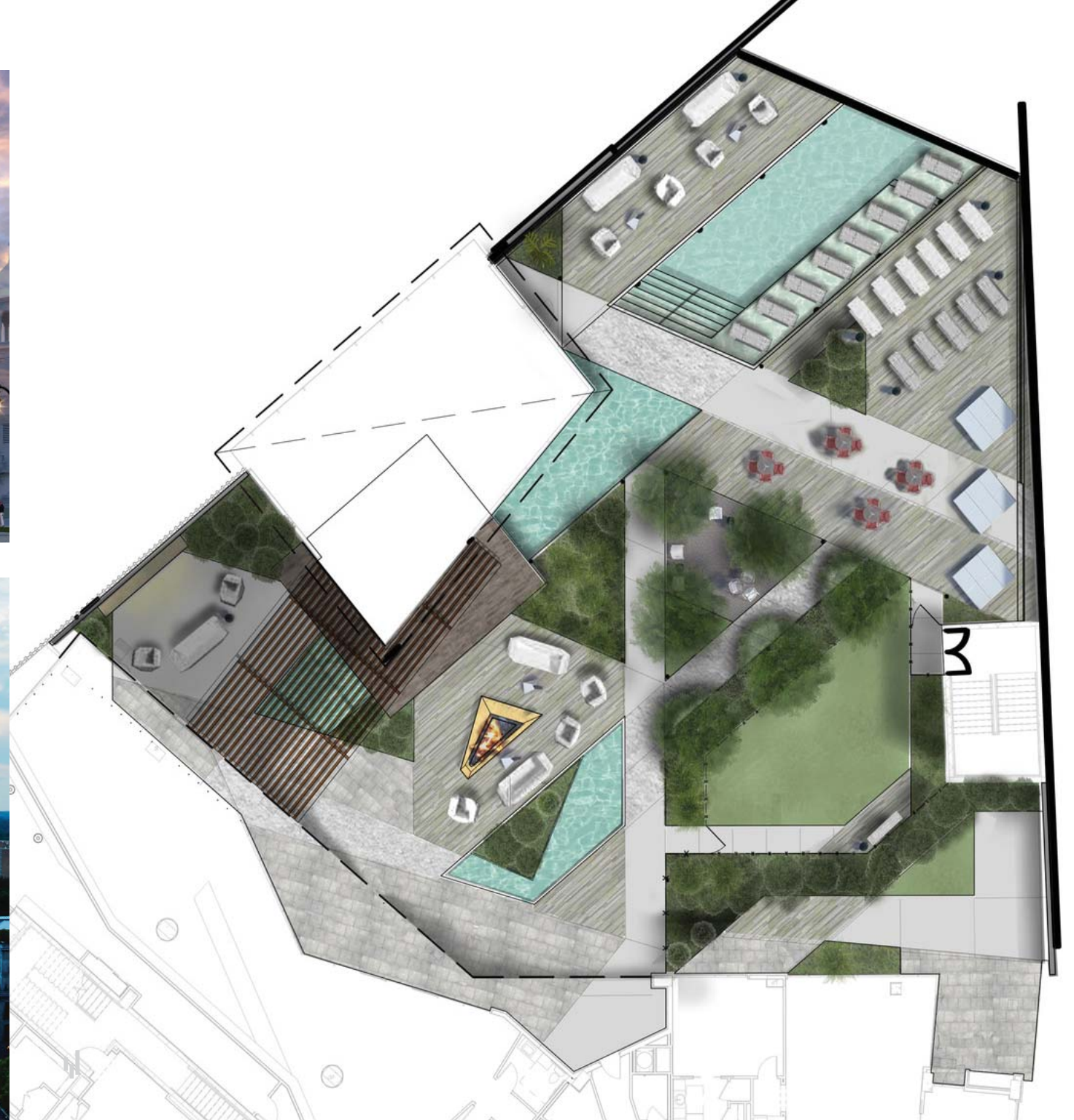
THE CHARLES AMENITY TERRACE

The Loudermilk Companies
Atlanta, GA

The Charles is an 18-story high-rise, mixed-used building in the heart of Buckhead Village.

Lord Aeck Sargent is providing architectural design services along with landscape design of a signature amenity terrace above the building's 6th floor. The contemporary design plays with the geometry of triangles as an abstraction of both the triangular-shaped site and the area's former identity as the "Buckhead Triangle."

The amenity terrace includes a pool, outdoor lounge, fire pit and standalone fitness pavilion weaved together through a series of angular lines and framed by views of the Buckhead skyline.



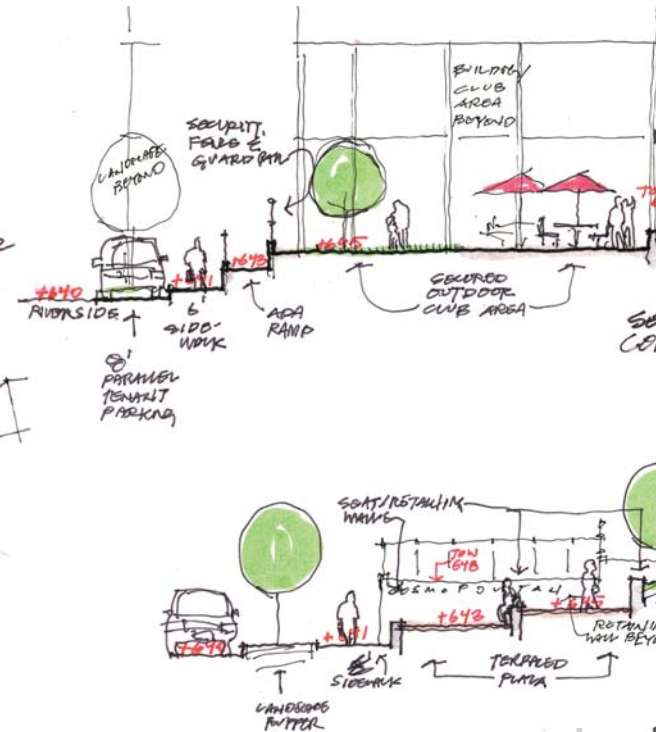
COSMOPOLITAN TULSA

Bomasada Group
Tulsa, OK



Cosmopolitan is an upscale, five-story, 264-unit development situated on a key site overlooking the Arkansas River and adjacent River Parks.

The landscape design takes advantage of the site's unique shape and varied topography, integrating a grand stair procession between the adjacent public River Park and the building's central courtyard. Other exterior amenities include a terraced corner plaza and a "skydeck" pool space located on the building's roof with panoramic views to both the river and Downtown Tulsa.



PERIMETER SUMMIT MASTER PLAN


Seven Oaks Development
Brookhaven, GA

Lord Aeck Sargent assisted the property management group of Perimeter Summit in developing a master plan for later phase developments.

At the time of the master planning effort, Perimeter Summit was partially built-out with three office towers, an apartment development and a special event facility. LAS re-conceived the

full build-out master plan including a new hotel, a fourth office tower and additional residential development. The master plan also included detailed design work on a place-making strategy to create a more usable central public plaza between development pads in an effort to tie the site together.



An architectural sketch of a park plaza. In the center is a large, oval-shaped open space with a light brown ground. Several small human figures are scattered throughout the plaza, some walking, some standing, and one riding a bicycle. The plaza is bordered by a low, light-colored wall. To the left, a multi-story building with a grid of windows and balconies is visible. To the right, there are more buildings, including a tall, white, modern-looking structure. Trees with green foliage are planted along the edges of the plaza. In the bottom left corner, a playground structure with a blue frame is partially visible.

“Their expertise in landscape architecture, site planning, and project management make the Lord Aeck Sargent team a great partner for many City of Atlanta park sites. We always find the Lord Aeck Sargent team to be thorough, creative, highly responsive, and easy to work with.”

Walt Ray, Former Assistant Director
Atlanta Office of Park Design

MIDTOWN POCKET PARKS

Midtown Alliance
Atlanta, GA

As a part of our long-standing partnership with the Midtown Alliance, Lord Aeck Sargent has provided on-call design and construction services on several signature parks in Midtown, including the temporary park at Peachtree and 10th streets, Arts Center Plaza, Fox Triangle Plaza and the 18th Street pocket park.

Design approaches for each space were contextually responsive, focused on creating “people places” in formerly uninhabitable locations. Each park seeks to provide opportunities for seating, casual activity and improving the visual environment within Midtown. While the Arts Center Plaza – in collaboration with EDAA – creates a lasting amenity and spans all four corners of the intersection of Peachtree and 15th streets, the 10th Street and 18th Street parks were specifically envisioned as tactical, temporary interventions serving as placeholders until future development is realized.



BUTLER PARK REVITALIZATION

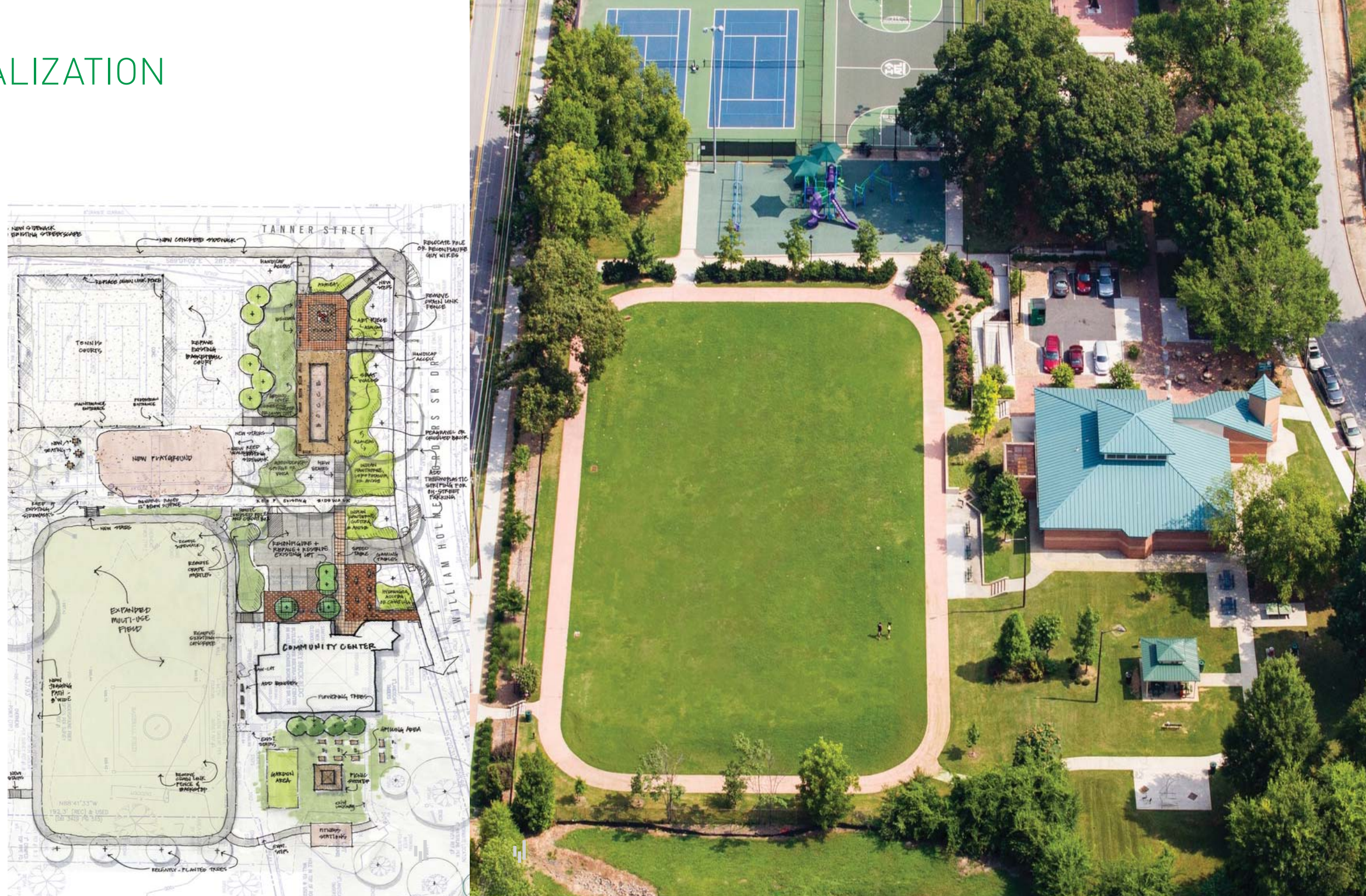
City of Atlanta, Atlanta Housing Authority
Atlanta, GA

Butler Park, a 3.4-acre major community gathering area and park named after Selena Sloan Butler, was opened in the 1960s as a counterpart to Grady Homes, a public housing site just east of Grady Hospital in Downtown Atlanta.

Over time the park fell into disrepair and was ultimately closed following severe tornado damage in 2008. Four years later, when Edgewood Avenue and Decatur Street corridors began thriving with new mixed-use development and retail activity Butler Park was now poised to become a reinvented centerpiece to a diverse community of new residents including active seniors, families with children and Georgia State University students.

Throughout 2010 and 2011, LAS helped the Atlanta Housing Authority and the City of Atlanta re-envision and re-build Butler Park. The design team facilitated community workshops, created a park master plan and oversaw the design and construction process leading up to the park's re-opening in Fall 2011. The new park includes a renovated Community Center, a new plaza with seating area and views of the Downtown skyline, a bocce court, a large new multi-age playground, a new multi-use field, exercise path and stations, outdoor table tennis, gaming tables, a pavilion/picnic area and a community garden.

Butler Park was the recipient of the National Recreation and Park Association's (NRPA) Parks Build Community project and was the highlighted project for the NRPA's Annual Congress and Exposition held in Atlanta in November 2011.



FOX TRIANGLE

Midtown Alliance
Atlanta, GA

Originally installed in 1996 for the Atlanta-hosted Olympic Games, this public space was situated in a traffic island that had fallen into disrepair in recent decades.

In 2007, Lord Aeck Sargent collaborated with the Midtown Alliance and Kimley-Horn Associates to re-envision this corner of Peachtree Street and Ponce de Leon Avenue as an iconic public plaza central to an urbanizing, and increasingly dynamic, part of the city. By reclaiming the high-speed vehicular slip line as a pedestrian zone, the space doubled in size.

The material palette is a synergy of old and new, integrating granite blocks and pavers with contemporary in-ground LED lights. The design is also contextually responsive, highlighting and celebrating historic streetcar tracks discovered underground during construction.

**Scope designed in collaboration with Kimley-Horn & Associates.*



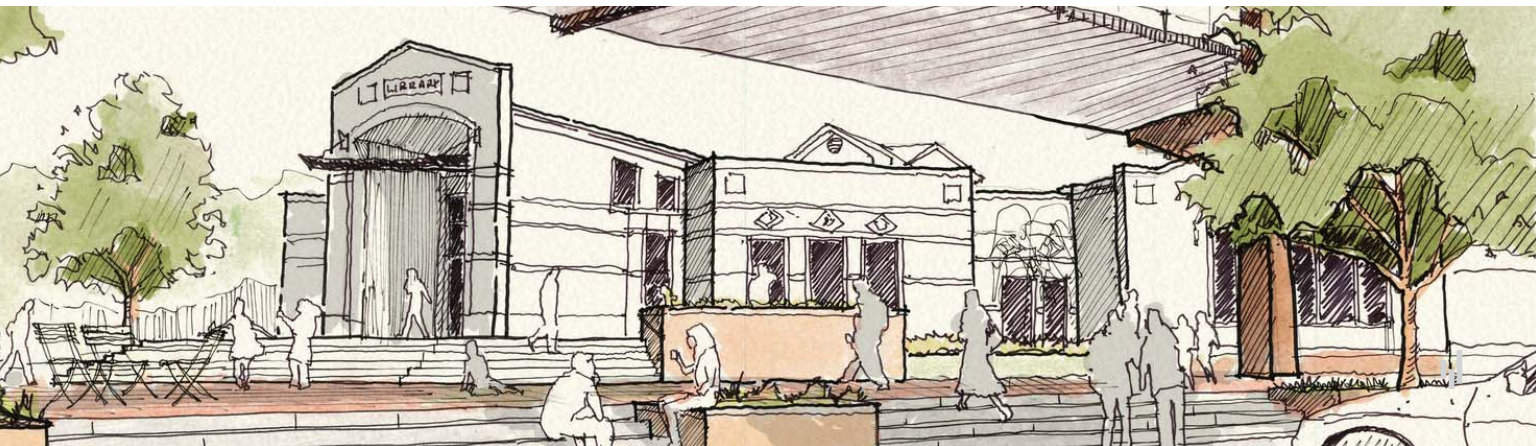
TOWN CENTER WEST PARK MASTER PLAN

City of Suwanee
Suwanee, GA

In the spring of 2016, the rapidly-growing City of Suwanee hired Lord Aeck Sargent lead a master planning effort for Town Center West.

The project focused on creating a new 25-acre park that would serve as an extension of the City's very successful Town Center Park. A robust public engagement process and an integrated design partnership (which included Clark Patterson Lee and jB+a) led to the creation of a dynamic park that capitalizes on the site's varied topography, providing a rich layering of pedestrian spaces and connections.

Features include a large amenity terrace, a gently sloped open event lawn, a quarter-acre pond and a series of outdoor rooms framed by a carefully-preserved tree canopy. The design is held together by a central pedestrian bridge that connects the Town Center to the amenity terrace while providing engaging views of the entire park. Since its completion, the master plan has been adopted by the Suwanee City Council and will soon begin the next stages of development.

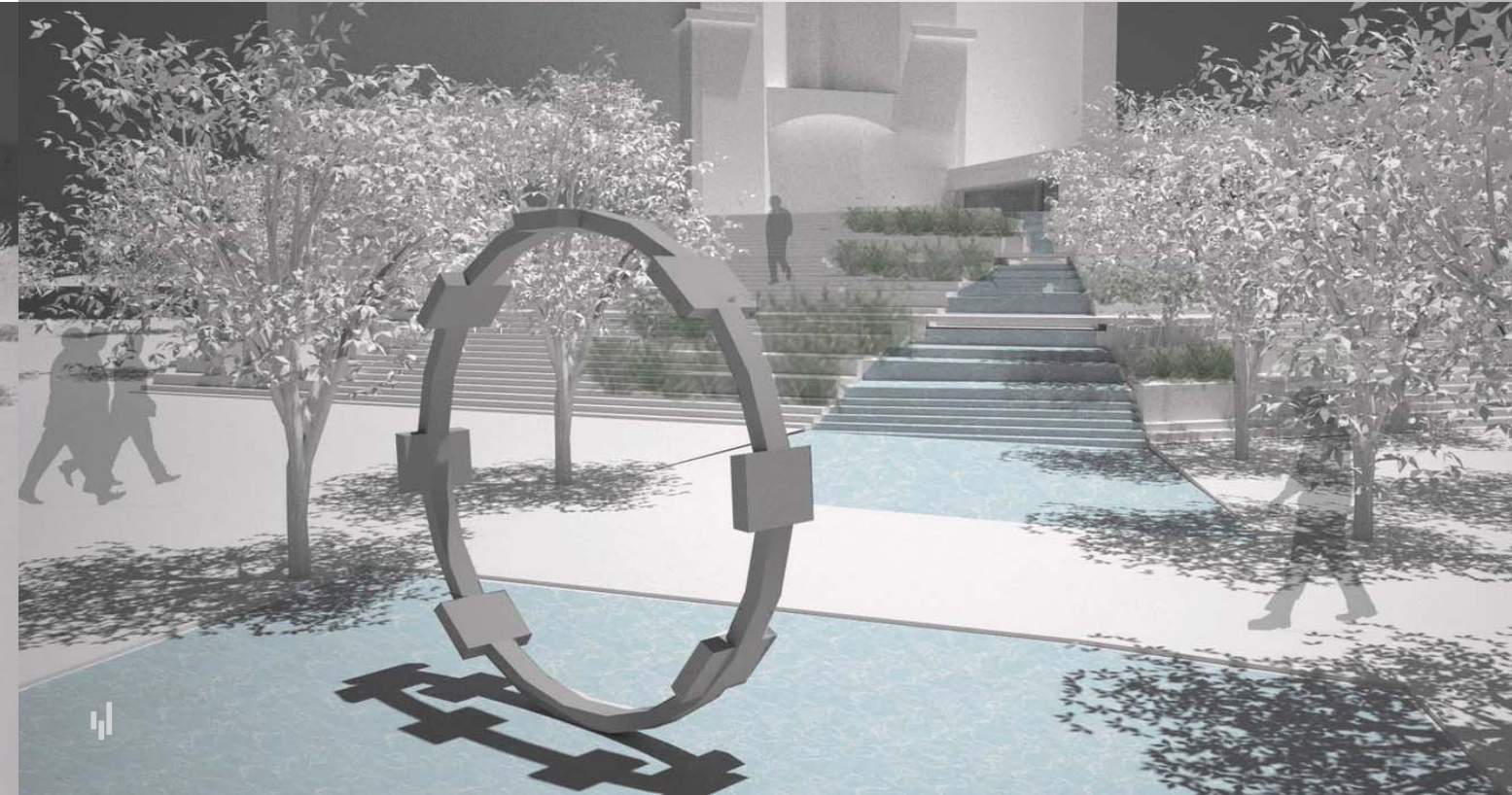


BANK OF AMERICA PLAZA MASTER PLAN

Shorenstein Realty Services
Atlanta, GA

As one of the most recognizable structures in the southeast, the Bank of America Plaza sits at the intersection of Atlanta's Downtown and Midtown neighborhoods along the City's prime corridor, Peachtree Street. Despite the building's role as a regional anchor, its street-front presence depicts an auto-centric and internalized language common during the time of its erection in the early 1990s. This has created a closed, isolated and static urban site that has tremendous opportunity. As both neighborhoods have flourished in the last decade this nexus is now prime for revitalization.

As part of a repositioning strategy, Shorenstein Realty Services hired Lord Aeck Sargent to explore the constraints and opportunities of this pivotal site. The study concentrated on creating several tiers of intervention that engage the urban street front and establish dynamic public spaces. These options ranged from small pocket parks for short-term interventions and infill retail buildings for a longer-term vision. The final vision resulted in the creation of an open and connected pocket park along Peachtree Street and a cascading large urban plaza along West Peachtree. Each of these concepts leveraged the opportunities presented by the existing topographic conditions in order to create an open and connected site.



DOCTORS' MEMORIAL PARK

City of Atlanta
Atlanta, GA

Over the last two years, Lord Aeck Sargent has been working with the City of Atlanta Office of Park Design on community engagement, master planning, landscape design and construction documents for this new neighborhood park on Atlanta's west side near the intersection of Fairburn Road and Benjamin E. Mays Drive.

The park's creation was initiated by Atlanta Council-member C.T. Martin as a way to create community gathering space serving for nearby senior housing, multifamily developments and users of nearby medical clinics.

The neighborhoods surrounding the forthcoming park – including Adamsville, Boulder Park, Collier Heights and Wilson Mill Meadows – were historically home to a range of prominent African-American doctors throughout the 1950s, '60s and '70s. In addition to serving as trailblazing professionals in the medical field, these doctors also played important roles as civil rights leaders. The doctors' leadership in both the local community and national movement are memorialized as part of a water feature in the park's corner plaza.



PETERS STREET PARKLETTE

Cross Properties
Atlanta, GA

In 2016, the owners of a prominent retail area in Atlanta's Historic Castleberry Hill district came to Lord Aeck Sargent with a unique design challenge: design a "park" within a 500-square-foot space.

Although spatially small, the area is located at a highly visible corner adjacent to transit and several major pedestrian/bike routes. The resulting design utilizes uniquely crafted raised wood decking to create a seating, activity staging and outdoor eating area while protecting the root zones of large canopy trees.

High-capacity bike storage, raised garden beds, solar lighting and raised planter beds are also key components of this tiny yet impactful space.





**STREETS
& TRAILS**

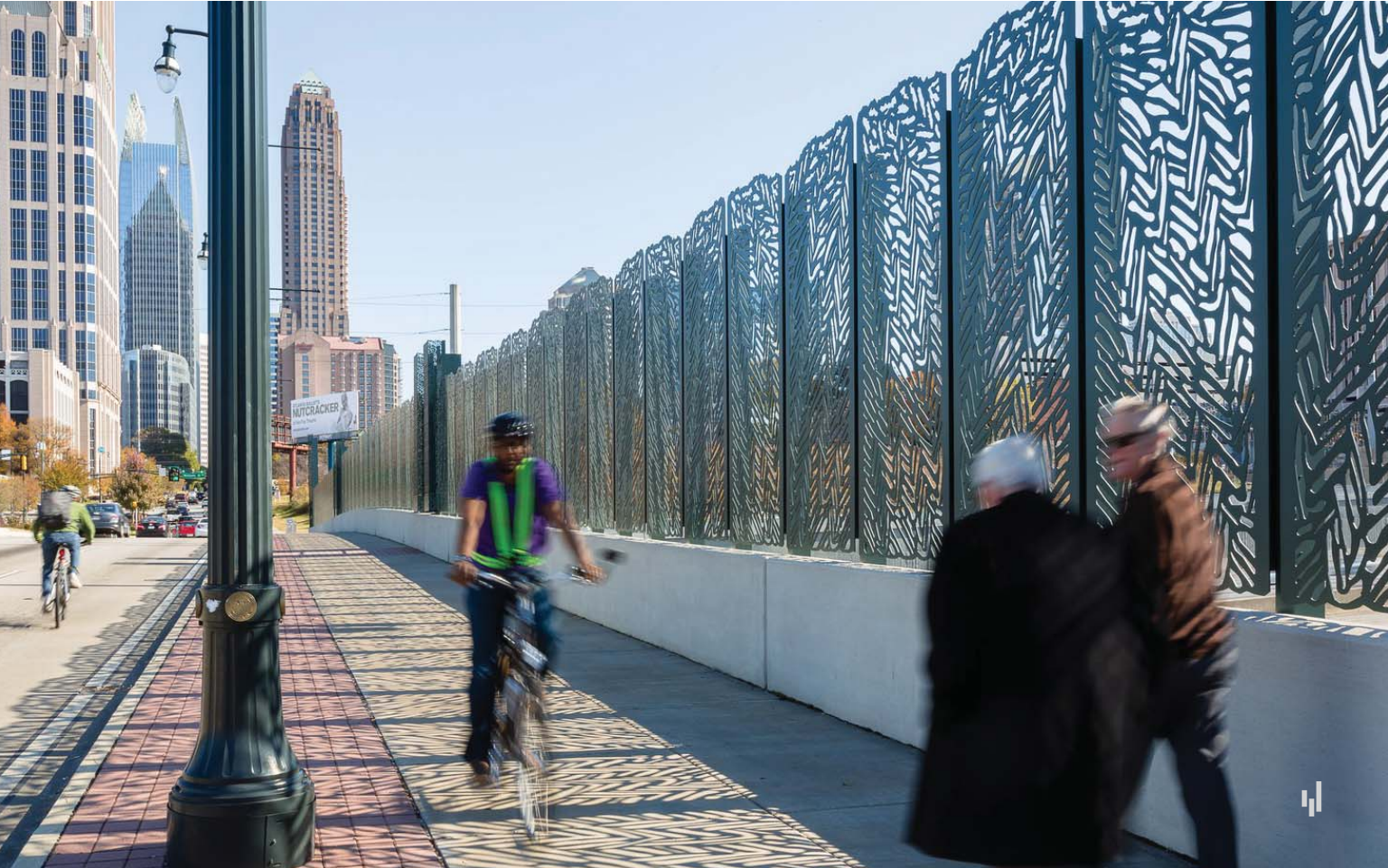
MIDTOWN STREETSCAPES

Midtown Alliance
Atlanta, GA

Over the past 20 years, Lord Aeck Sargent's role assisting the Midtown Alliance has expanded beyond planning and development into landscape design and construction and helping manage an aggressive public space implementation program.

On a day-to-day basis, LAS continues to be heavily involved in many facets of Midtown's Public Spaces program, from

streetscape/park design and construction oversight to funding management and stakeholder outreach. To date, the program has installed more than a dozen miles of new sidewalks, over 700 new trees and acres of new park and plaza spaces.



JUNIPER STREET

Midtown Alliance
Atlanta, GA

The Juniper Street Transformation Project will create high quality bike-ways and improve pedestrian amenities while also ensuring that vehicular traffic moves through at a steady (yet calmer) pace. Plans include new wider sidewalks, MARTA bus stops, street trees, pedestrian scaled lighting, trash/recycling receptacles, and a network of stormwater planters that localize rainwater management, thereby reducing demand on City infrastructure. Adjacent to sidewalks will be a seven-foot-wide bike lane protected by a wide (typically fourteen feet) raised/planted barrier. Parallel parking within portions of the buffer will provide another layer of protection for those walking or biking. The roadway will include two vehicular travel lanes (typically ten feet wide each) with additional dedicated turn lanes at key intersections with higher traffic demand. Juniper Street improvements will span twelve blocks between 14th Street and Ponce de Leon Avenue.

**Scope designed in collaboration with TSW and Kimley-Horn & Associates.*

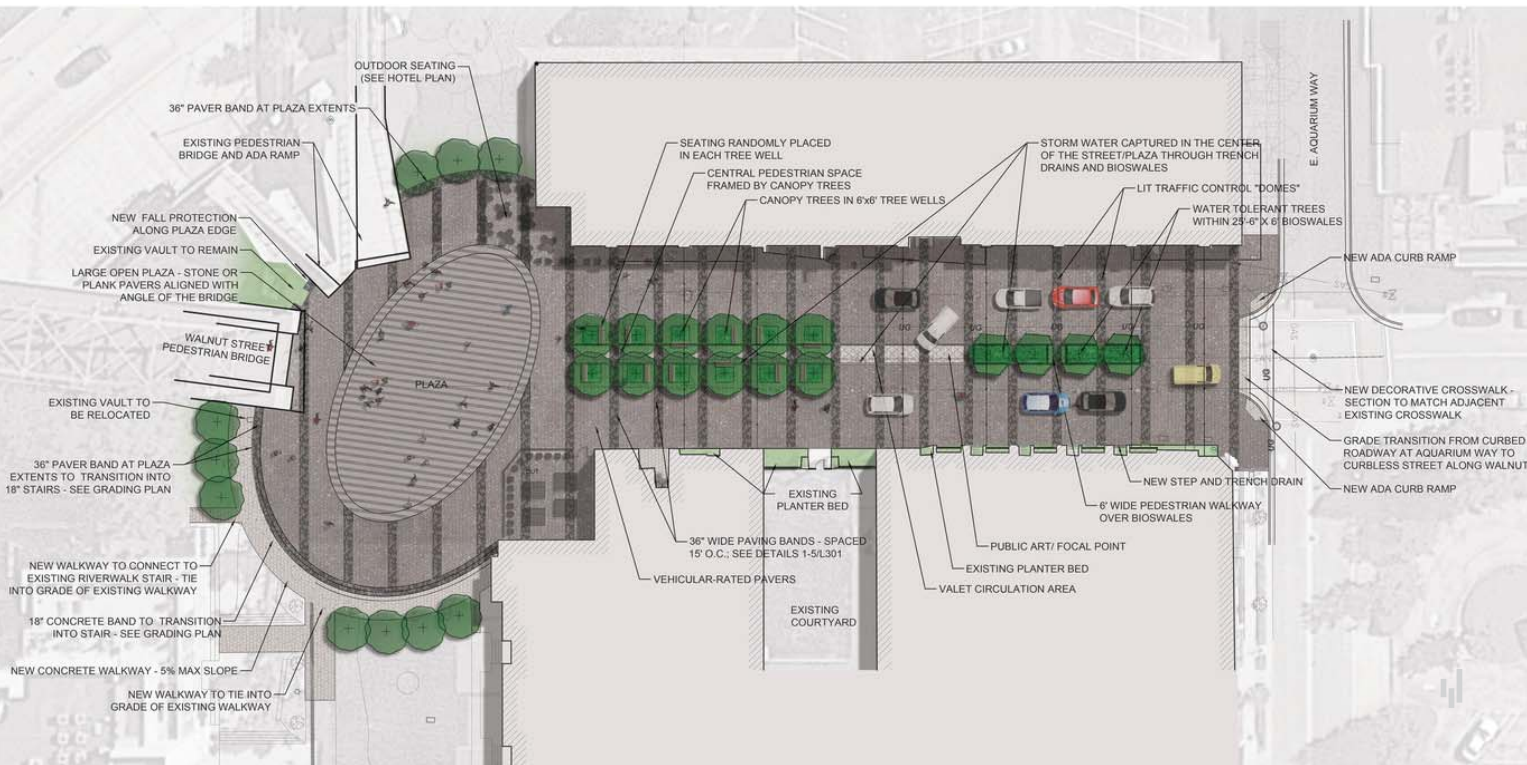
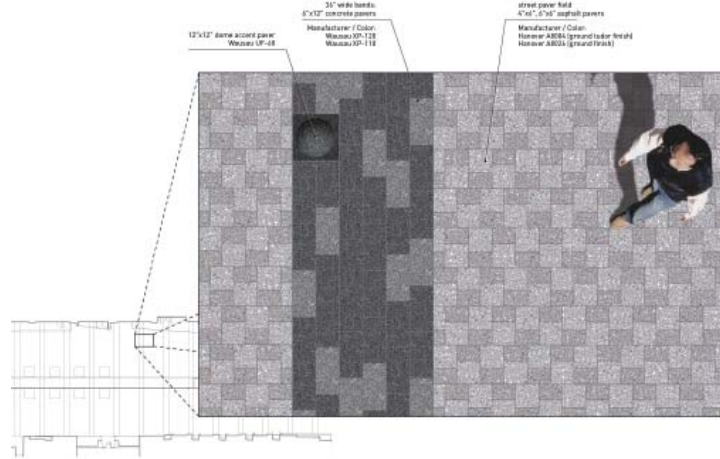


WALNUT STREET TRANSFORMATION

Vision Hospitality Group & PVDesign
Chattanooga, TN

The southern gateway of the Walnut Street pedestrian bridge today serves as a nexus of pedestrian activity given its connections to 1st Street and the glass bridge, its proximity to nearby cultural destinations, and its location within a rapidly-densifying urban context. This same block of Walnut Street between 1st and 2nd Streets will be further intensified when it serves as the front door of the forthcoming Walnut Street Hotel. Given these considerations, the portion of Walnut Street in question must be thought of not only as a access point for vehicles, but a “place” in and of itself that accommodates alternative modes of mobility and serves as a gathering point for public functions. The Walnut Street transformation project shows how intelligent design can connect a variety of urban conditions by careful placemaking.

**Scope designed in collaboration with W.M. Whitaker & Associates, and PV Design, Inc..*



TECHNOLOGY PARK MULTI-USE TRAILS STUDY

City of Peachtree Corners
Peachtree Corners, GA

Lord Aeck Sargent worked hand-in-hand with ALTA Planning + Design on a Multi-Use Trails Master Plan for the City of Peachtree Corners’ central business district, along with a detailed design for a priority Phase 1 trail (1.6 miles in length).

The Master Plan area covers approximately 1,500 acres and is designed to create more than 10 miles of trails connecting a series of employment and residential centers along with two existing trails. The trails plan builds off of LAS’s previous planning efforts for the City and is mindful of opportunities for new mixed-use development along trail edges.

Shortly after the master plan’s adoption, the City hired LAS/ALTA to prepare construction documentation for the City’s first trail that seeks to amenitize a hidden lake and connect the City’s two existing trails.

**Scope designed in collaboration with Alta Planning and Design*



ATLANTA BICYCLE NETWORKS

City of Atlanta
Atlanta, GA

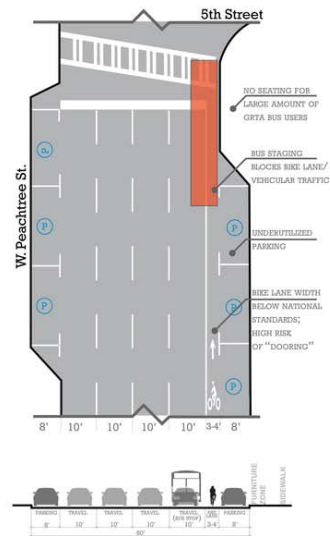
In recent years, The City of Atlanta has spearheaded the implementation of key, high quality bike facilities as part of a rapidly expanding citywide bicycle and pedestrian network.

Guided by planning efforts such as the Connect Atlanta Transportation Plan, Cycle Atlanta Livable Centers Initiative, Blueprint Midtown and BeltLine Subarea Plans, these new facilities help bolster transit ridership, increase “last mile” trips and provide safe and inclusive mobility options in the City’s core.

Based on recommendations of these ongoing bicycle planning initiatives and as an extension of the Midtown Public Spaces Program, Lord Aeck Sargent continues to help design and oversee construction of many of the City's first NACTO-compliant bicycle facilities including the 10th Street Cycle Track, Juniper Street Transformation project, Piedmont Avenue Complete Street retrofit and many others. For projects ranging from small-scale "bike box" facilities to mile-long "cycle tracks," LAS plays a key design role in understanding the complexities of modern bicycle facilities and what it takes to successfully implement them.

Existing

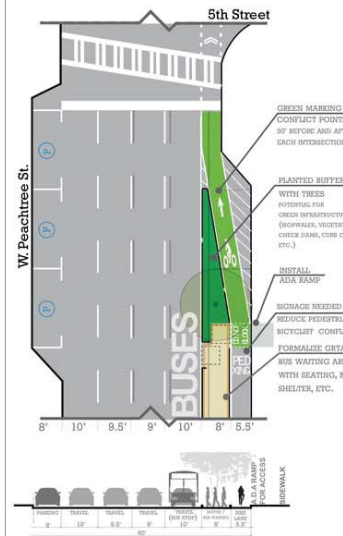
Current condition on West Peachtree Street between North Avenue and 12th Street includes 3'-4"-wide Bike Lane alongside parallel on-street parking, creating potential "dooring" issues for cyclists. It also does not meet national/state/city standards.



OPTION A

Removes existing on-street parking in many locations and slightly narrows travel lanes in order to expand/shift existing bike lane towards curb between bulb-outs. A new planted bike lane buffer is created for some areas with formalized GRTA bus pedestrian waiting zones within it.

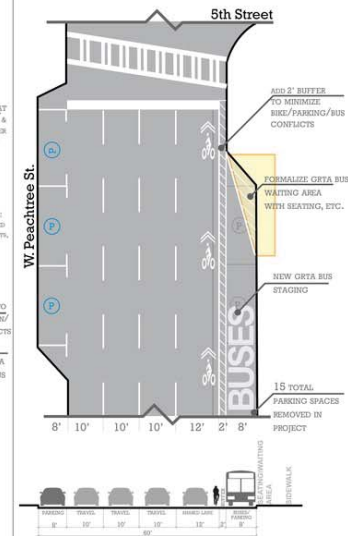
Estimated Construction Cost: \$320,000



OPTION B

Converts vehicular and bike lanes into combined 12' sharrow lane with a 2' buffer between on-street parking. Includes new bike signage, some new lane striping and ped upgrades to GRTA bus stops. Also includes some removal of on-street parking in order to create dedicated GRTA bus staging

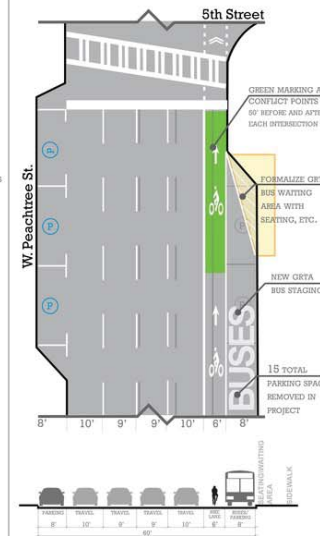
Estimated Construction Cost: \$95,000



OPTION C

Narrows travel lanes in order to widen existing bike lane from 3-4' to 6'. Includes addition of green paint, new signage, lane restriping and ped upgrades to GRTA bus stops. Also includes some removal of on-street parking in order to create dedicated GRTA bus staging.

Estimated Construction Cost: \$160,000



TOWN BRANCH COMMONS

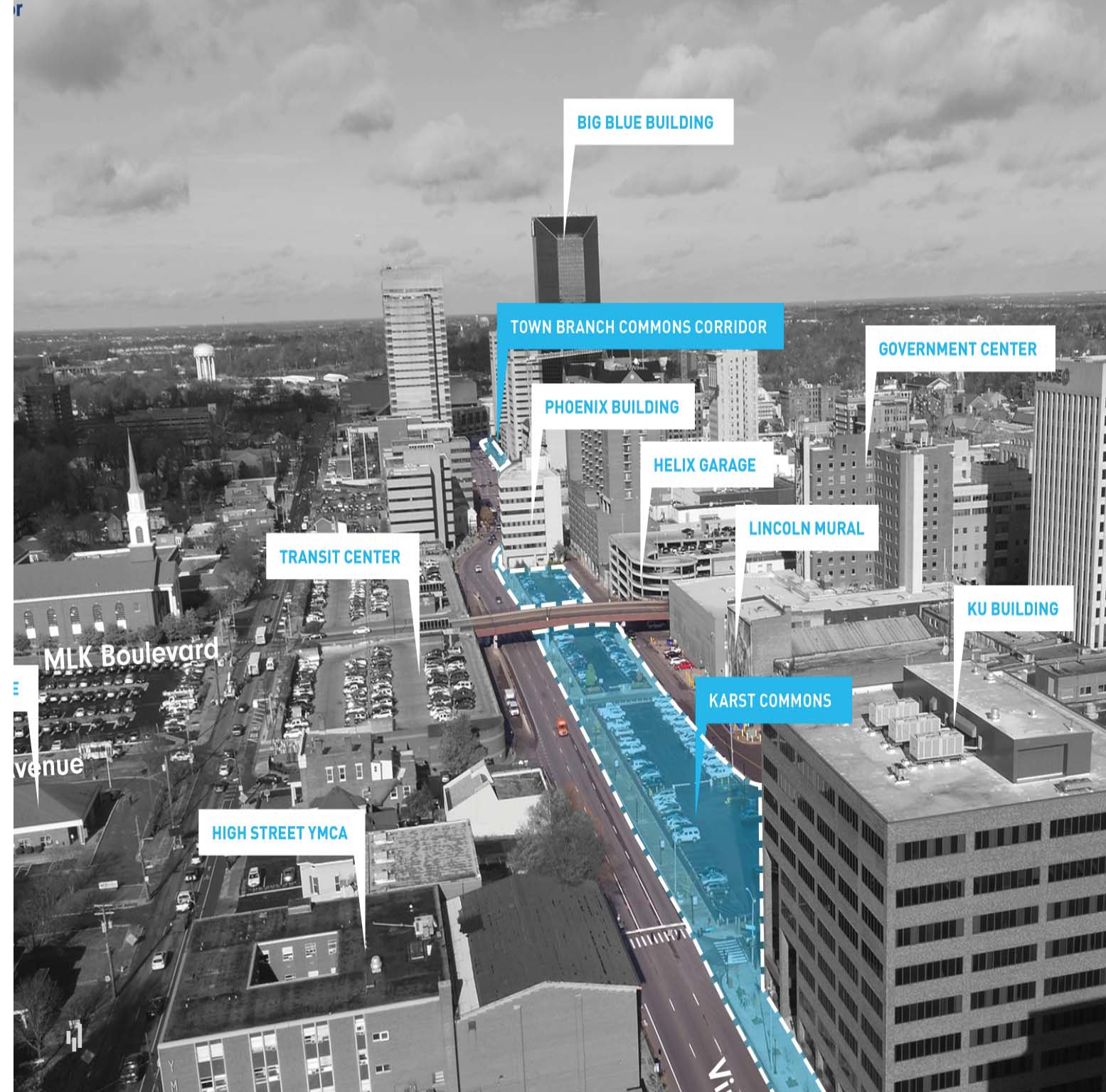
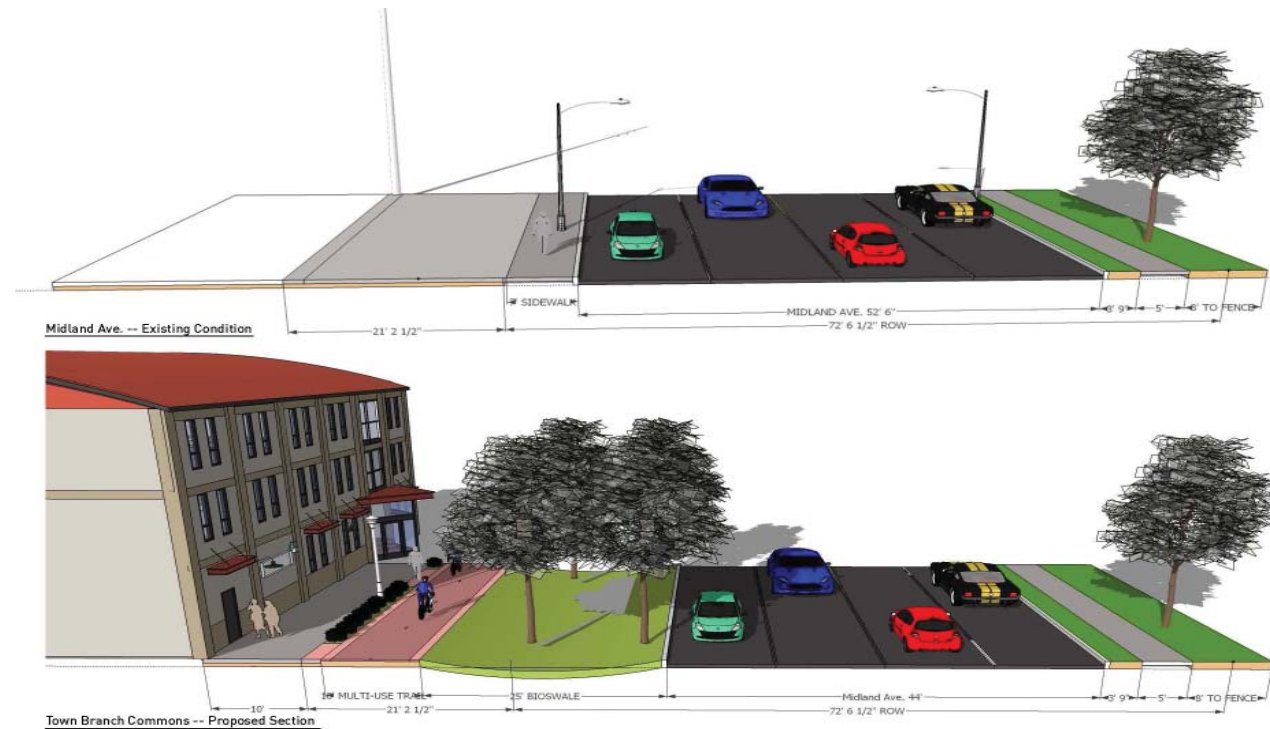
City of Lexington
Lexington, KY

In March 2011, Lexington Mayor Jim Gray announced the appointment of the 47-member Arena, Arts & Entertainment District Task Force.

The Task Force, led by Lord Aeck Sargent, conducted a year-long planning process, which culminated in the creation of the Rupp Arena Arts & Entertainment District Master Plan. The Plan called for a comprehensive renovation of historic Rupp Arena, a new Lexington Convention Center, a major new public park and mixed-use development in the current High Street parking lot.

The public centerpiece of the plan is the larger Town Branch Commons, a unified thread of public space that runs throughout the district and connects the center of Downtown to the edges. The Town Branch Commons plan, completed in collaboration with SCAPE Studio, explores possibilities of day lighting Town Branch and creating new water features in Downtown.

Lord Aeck Sargent continues to serve as the city's Program Manager as the design and funding of Town Branch Commons evolves. This includes design review, community involvement and coordination with partners and stakeholders.



PIEDMONT AVENUE COMPLETE STREET

Midtown Alliance
Atlanta, GA

Piedmont Avenue is one of Atlanta’s key north-south connections between the Downtown, Midtown and Buckhead activity centers. The segment through Midtown in particular serves as an important link within the city’s rapidly developing network of high-quality bike infrastructure. However, its current condition exhibits major pedestrian/bike safety issues, pervasive vehicular speeding, underutilized parking areas and ADA issues.

In 2016, Midtown Alliance (working with Renew Atlanta) hired Lord Aeck Sargent to lead a conceptual design and public outreach process for the segment of Piedmont between Ponce de Leon Avenue and 15th Streets. Working with Kimley-Horn as our transportation partner, LAS identified and analyzed issues and opportunities within the corridor in order to develop “complete street” concepts balancing vehicular, bicycle and pedestrian mobility. The conceptual designs were used to facilitate a highly collaborative public input process. The resulting “preferred” alternative includes enhanced pedestrian crossings, maximization of on-street permanent parking, traffic-calming measures and a northbound protected bike lane connected to five existing bike routes.



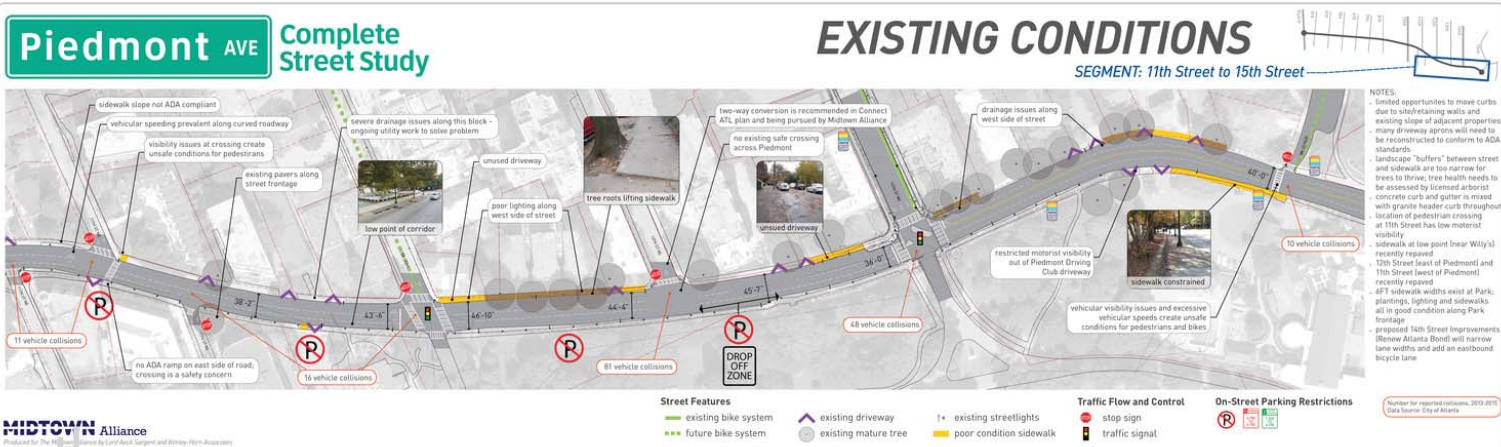
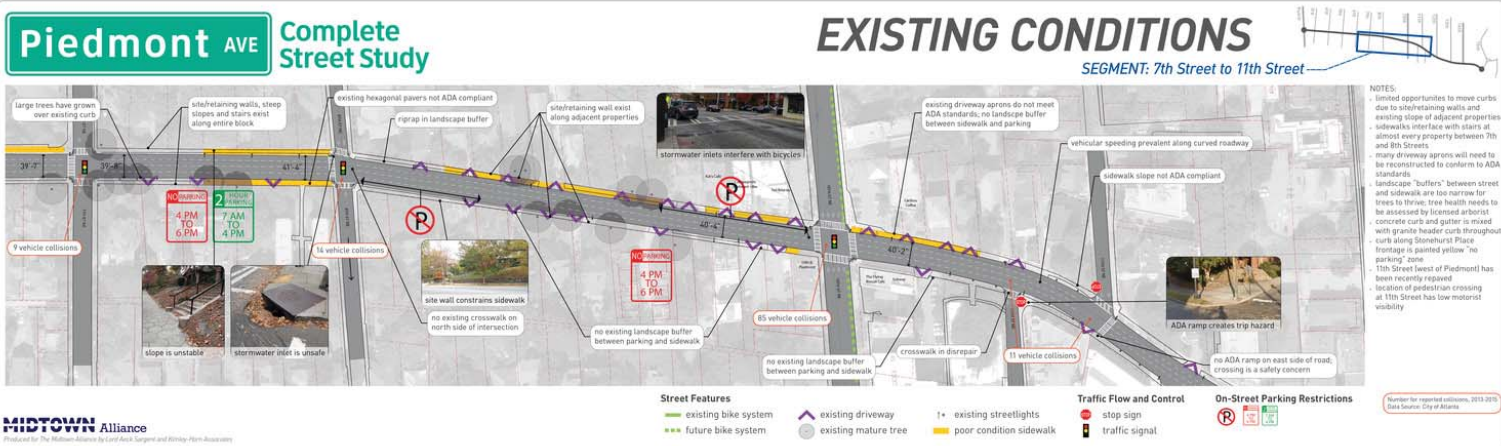
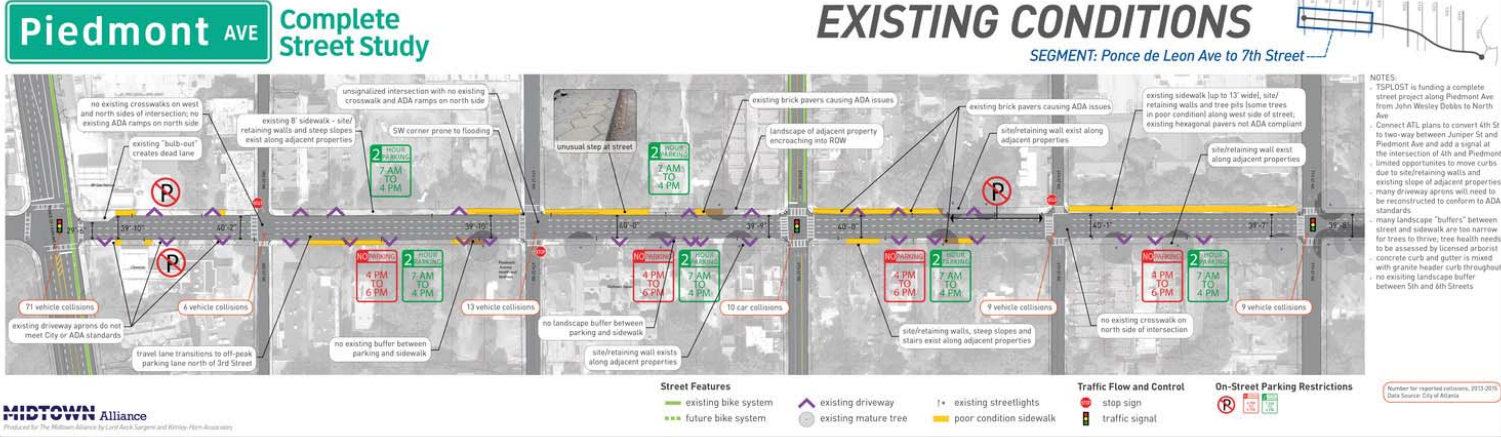
Proposed Typical Condition:
Ponce de Leon to 12th Street



Proposed Typical Condition:
12th Street to 14th Street



Proposed Typical Condition:
14th Street to 15th Street



06

FIRM PROFILE

RESPONSIVE DESIGN

Lord Aeck Sargent is an architecture and design firm with a 75-year history of creating environments people want to use and preserve.

With offices in Atlanta GA, Austin TX, Ann Arbor MI, Chapel Hill NC, Lexington KY and Washington DC, our firm has eight practice areas:

- Science & Technology
- Higher Education
- Arts & Culture
- Historic Preservation
- Housing & Mixed-Use
- Landscape Architecture
- Urban Design & Planning
- Interior Design

We share a common mission of providing responsive design, technological expertise and exceptional service in order to provide our clients with the best possible facilities that will serve them well into the future.



We thrive in the midst of complex projects that require depth of experience and cross-discipline collaboration. Responsive design has been our guiding philosophy for seventy years, and we deliver uniquely creative responses to each project's every detail. The result is thoughtful solutions that respond to the site, the context and the needs of its occupants.

Our portfolio includes museums, arts centers, government buildings, laboratories, corporate headquarters, education facilities and conference facilities. Our services range from master planning and programming to design, construction administration and facility management support.

Our design staff represents a broad range of experiences in design and construction. Our staff includes registered architects, urban designers, materials specialists, interior designers, landscape architects, land planners, cost estimators and zoning specialists.

170+

dedicated
professionals

130+

college & university
clients nationwide

60+

LEED-accredited
professionals

70+

LEED-certified projects

2030

LAS was one of the first
architecture firms in the country to
adopt The 2030 Challenge



PRACTICE AREAS





LORDAECKSARGENT.COM

877-929-1400

ATLANTA

CHAPEL HILL

ANN ARBOR

AUSTIN

LEXINGTON

WASHINGTON, DC



RESPONSIVE DESIGN